

# GAUMER PROCESS

HEATERS  
SYSTEMS  
CONTROLS

## Fuel Gas Heaters

Type 3FG (6FG)(9FG)(15FG)  
300#, 600#, 900#, and 1500# Ratings

### APPLICATIONS

For heating gases under high pressures. It is most commonly used to reduce the moisture and the formation of ice during any pressure reduction of the gas. Although 20-23 W/sq.in. is considered a standard for most fuel gas heating applications to 300° F, care must be taken to assure constant and even flow of the gas over the heating bundle. Process flow conditions may require the reduction of the heater Watt-Density to 12-15 Watts/Sq.In. and if the outlet gas temperature must exceed 300° F then even a lower Watt-Density is necessary. Contact Gaumer for specific recommendations.

### STANDARD FEATURES

#### Pipebody Chamber

- All Welded Construction
- 100% Hydrostatic Tested
- Sizes to 24 in. Diam. Available as Standard
- Over 200 Nozzle Arrangements are Standard
- Both Vertical and Horizontal Models Standard
- Both Mtg Brackets and Saddles are Standard
- Drain Plugs Where Applicable are Standard
- Chamber Connection Type and Size per Options detailed on Catalog Page
- Chamber Connection Type and Size other than that detailed on Catalog Page

#### Heating Elements

- Incoloy 800 Sheath Material, Sealed Terminal
- Heavy Wall (.035 in.), Large diameter (.475 in.)

#### Spacers

- Rugged Design, High Temp Alloy Material
- "Evenflow" Configuration Standard

#### Construction

- Welded Heating Elements
- Welded Terminal Housings and Spacers

#### Installation

- Flying Leadwires Factory Installed
- Only Standard Materials Needed in Field

#### Service

- Wiring Modifiable in Field
- Assembly Repairable at Factory



### SPECIAL FEATURES

- 600#, 900#, 1500#, etc. Construction
- ASME Coded and Stamped Heater
- ASME Coded and Stamped Chamber
- Stainless Steel Construction - Type 304, 316
- Explosion Resistant Terminal Enclosure
- Sheath Sensing Type K (J) Thermocouple attached to one element for overheat
- Offset (Spaced Away) Terminal Housing
- Space Heater Mounted in Term. Enclosure
- Insulation Jkt (CaSi-2 in.) Alum. Jacket
- Insulation Jkt (CaSi-2 in.) Stain.Stl.Jacket
- Insulation Jacket - Weatherproof Const.
- Insulation Jacket Other than Cataloged
- Thermowell/TC (Type J/K) mtd. in Outlet
- Special Feature not Listed Above

11/19/2001

Page 1 of 16

GAUMER COMPANY, INC. · 13616 Hempstead Road · Houston · Texas · 77040 · Ph: 713.460.5200  
Ph: 800.460.5200 · Fx: 713.460.1444 · Fx: 800.460.5700 · www.gaumer.com · sales@gaumer.com

# Fuel Gas Heaters

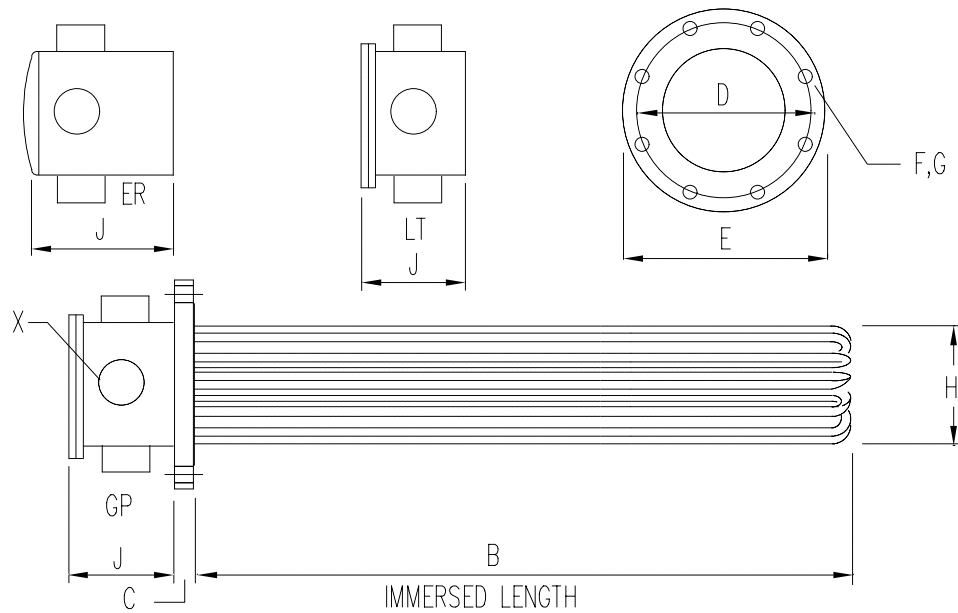
## Type 3FG (6FG)(9FG)(15FG)

### 300#, 600#, 900#, and 1500# Ratings

#### Gaumer Drawing No. FG-200 (Dimension Flange Heater Detail)

| Rating<br>(lb.) | Flange<br>Size<br>(in) | Flange Dimensions<br>(inches) |         |         | Bolt<br>Size<br>F | Qty of<br>Holes<br>G | Inside<br>Diam.<br>H | Housing Height<br>(inches) |       |       | X - No and Size Conduit<br>Connection |         |         |
|-----------------|------------------------|-------------------------------|---------|---------|-------------------|----------------------|----------------------|----------------------------|-------|-------|---------------------------------------|---------|---------|
|                 |                        | C Thick                       | D Diam: | E Diam: |                   |                      |                      | J GP:                      | J ER: | J LT: | GP:                                   | ER:     | LT:     |
| 300             | 3                      | 1-1/8                         | 6-5/8   | 8-1/4   | 3/4               | 8                    | 2-3/4                | 2-5/8                      | 5-1/2 | 2-5/8 | 1@1                                   | 2@1-1/4 | 1@1     |
| 300             | 4                      | 1-1/4                         | 7-7/8   | 10      | 3/4               | 8                    | 3-13/16              | 5-1/2                      | 6-1/2 | 5-1/2 | 4@1-1/2                               | 2@1-1/2 | 4@1-1/2 |
| 300             | 5                      | 1-3/8                         | 9-1/4   | 11      | 3/4               | 8                    | 4-13/16              | 5-1/2                      | 6-1/2 | 5-1/2 | 4@1-1/2                               | 2@1-1/2 | 4@1-1/2 |
| 300             | 6                      | 1-7/16                        | 10-5/8  | 12-1/2  | 3/4               | 12                   | 5-3/4                | 5-1/2                      | 8     | 5-1/2 | 4@1-1/2                               | 4@1-1/2 | 4@1-1/2 |
| 300             | 8                      | 1-5/8                         | 13      | 15      | 7/8               | 12                   | 7-13/16              | 5-1/2                      | 9     | 5-1/2 | 4@1-1/2                               | 4@1-1/2 | 4@1-1/2 |
| 300             | 10                     | 1-7/8                         | 15-1/4  | 17-1/2  | 1                 | 16                   | 9-5/8                | 7                          | 11    | 7     | 4@2                                   | 4@2     | 4@2     |
| 300             | 12                     | 2                             | 17-3/4  | 20-1/2  | 1-1/8             | 16                   | 11-5/8               | 7                          | 11    | 7     | 4@2                                   | 4@2     | 4@2     |
| 300             | 14                     | 2-1/8                         | 20-1/4  | 23      | 1-1/8             | 20                   | 12-1/2               | 7                          | 11    | 7     | 4@2                                   | 4@2     | 4@2     |
| 300             | 16                     | 2-1/4                         | 22-1/2  | 25-1/2  | 1-1/4             | 20                   | 14-1/2               | 9                          | 13    | 9     | 4@2                                   | 4@2     | 4@2     |
| 300             | 18                     | 2-3/8                         | 24-3/4  | 28      | 1-1/4             | 24                   | 16-3/8               | 9                          | 13    | 9     | 4@2                                   | 4@2     | 4@2     |
| 300             | 20                     | 2-1/2                         | 27      | 30-1/2  | 1-1/4             | 24                   | 18-5/16              | 9                          | 13    | 9     | 4@2                                   | 4@2     | 4@2     |
| 300             | 24                     | 2-3/4                         | 32      | 36      | 1-1/2             | 24                   | 22-1/8               | 11                         | 15    | 11    | 6@2                                   | 6@2     | 6@2     |
| 600             | 3                      | 1-1/4                         | 6-5/8   | 8-1/4   | 3/4               | 8                    | 2-3/4                | 2-5/8                      | 5-1/2 | 2-5/8 | 1@1                                   | 2@1-1/4 | 1@1     |
| 600             | 4                      | 1-1/2                         | 8-1/2   | 10-3/4  | 7/8               | 8                    | 3-13/16              | 5-1/2                      | 6-1/2 | 5-1/2 | 4@1-1/2                               | 2@1-1/2 | 4@1-1/2 |
| 600             | 5                      | 1-3/4                         | 10-1/2  | 13      | 1                 | 8                    | 4-13/16              | 5-1/2                      | 6-1/2 | 5-1/2 | 4@1-1/2                               | 2@1-1/2 | 4@1-1/2 |
| 600             | 6                      | 1-7/8                         | 11-1/2  | 14      | 1                 | 12                   | 5-3/4                | 5-1/2                      | 8     | 5-1/2 | 4@1-1/2                               | 4@1-1/2 | 4@1-1/2 |
| 600             | 8                      | 2-3/16                        | 13-3/4  | 16-1/2  | 1-1/8             | 12                   | 7-13/16              | 5-1/2                      | 9     | 5-1/2 | 4@1-1/2                               | 4@1-1/2 | 4@1-1/2 |
| 600             | 10                     | 2-1/2                         | 17      | 20      | 1-1/4             | 16                   | 9-5/8                | 7                          | 11    | 7     | 4@2                                   | 4@2     | 4@2     |
| 600             | 12                     | 2-5/8                         | 19-1/4  | 22      | 1-1/4             | 20                   | 11-5/8               | 7                          | 11    | 7     | 4@2                                   | 4@2     | 4@2     |
| 600             | 14                     | 2-3/4                         | 20-3/4  | 23-3/4  | 1-3/8             | 20                   | 12-1/2               | 7                          | 11    | 7     | 4@2                                   | 4@2     | 4@2     |
| 600             | 16                     | 3                             | 23-3/4  | 29      | 1-1/2             | 20                   | 14-1/2               | 9                          | 13    | 9     | 4@2                                   | 4@2     | 4@2     |
| 600             | 18                     | 3-1/4                         | 25-3/4  | 29-1/4  | 1-5/8             | 20                   | 16-3/8               | 9                          | 13    | 9     | 4@2                                   | 4@2     | 4@2     |
| 600             | 20                     | 3-1/2                         | 28-1/2  | 32      | 1-5/8             | 24                   | 18-5/16              | 9                          | 13    | 9     | 4@2                                   | 4@2     | 4@2     |
| 600             | 24                     | 4                             | 33      | 37      | 1-7/8             | 24                   | 22-1/8               | 11                         | 15    | 11    | 6@2                                   | 6@2     | 6@2     |
| 900             | 3                      | 1-1/2                         | 7-1/2   | 9-1/2   | 7/8               | 8                    | 2-3/4                | 2-5/8                      | 5-1/2 | 2-5/8 | 1@1                                   | 2@1-1/4 | 1@1     |
| 900             | 4                      | 1-3/4                         | 9-1/4   | 11-1/2  | 1-1/8             | 8                    | 3-13/16              | 5-1/2                      | 6-1/2 | 5-1/2 | 4@1-1/2                               | 2@1-1/2 | 4@1-1/2 |
| 900             | 5                      | 2                             | 11      | 13-3/4  | 1-1/4             | 8                    | 4-13/16              | 5-1/2                      | 6-1/2 | 5-1/2 | 4@1-1/2                               | 2@1-1/2 | 4@1-1/2 |
| 900             | 6                      | 2-3/16                        | 12-1/2  | 15      | 1-1/8             | 12                   | 5-3/4                | 5-1/2                      | 8     | 5-1/2 | 4@1-1/2                               | 4@1-1/2 | 4@1-1/2 |
| 900             | 8                      | 2-1/2                         | 15-1/2  | 18-1/2  | 1-3/8             | 12                   | 7-13/16              | 5-1/2                      | 9     | 5-1/2 | 4@1-1/2                               | 4@1-1/2 | 4@1-1/2 |
| 900             | 10                     | 2-3/4                         | 18-1/2  | 21-1/2  | 1-3/8             | 16                   | 9-5/8                | 7                          | 11    | 7     | 4@2                                   | 4@2     | 4@2     |
| 900             | 12                     | 3-1/8                         | 21      | 24      | 1-3/8             | 20                   | 11-5/8               | 7                          | 11    | 7     | 4@2                                   | 4@2     | 4@2     |
| 900             | 14                     | 3-3/8                         | 22      | 25-1/4  | 1-1/2             | 20                   | 12-1/2               | 7                          | 11    | 7     | 4@2                                   | 4@2     | 4@2     |
| 900             | 16                     | 3-1/2                         | 24-1/2  | 27-3/4  | 1-5/8             | 20                   | 14-1/2               | 9                          | 13    | 9     | 4@2                                   | 4@2     | 4@2     |
| 900             | 18                     | 4                             | 27      | 31      | 1-7/8             | 20                   | 16-3/8               | 9                          | 13    | 9     | 4@2                                   | 4@2     | 4@2     |
| 900             | 20                     | 4-1/4                         | 29-1/2  | 33-3/4  | 2-1/2             | 20                   | 18-5/16              | 9                          | 13    | 9     | 4@2                                   | 4@2     | 4@2     |
| 900             | 24                     | 5-1/2                         | 35-1/2  | 41      | 2-1/2             | 20                   | 22-1/8               | 11                         | 15    | 11    | 6@2                                   | 6@2     | 6@2     |
| 1500            | 3                      | 1-7/8                         | 8       | 10-1/2  | 1-1/8             | 8                    | 2-3/4                | 2-5/8                      | 5-1/2 | 2-5/8 | 1@1                                   | 2@1-1/4 | 1@1     |
| 1500            | 4                      | 2-1/8                         | 9-1/2   | 12-1/4  | 1-1/4             | 8                    | 3-13/16              | 5-1/2                      | 6-1/2 | 5-1/2 | 4@1-1/2                               | 2@1-1/2 | 4@1-1/2 |
| 1500            | 5                      | 2-7/8                         | 11-1/2  | 14-3/4  | 1-1/2             | 8                    | 4-13/16              | 5-1/2                      | 6-1/2 | 5-1/2 | 4@1-1/2                               | 2@1-1/2 | 4@1-1/2 |
| 1500            | 6                      | 3-1/4                         | 12-1/2  | 15-1/2  | 1-3/8             | 12                   | 5-3/4                | 5-1/2                      | 8     | 5-1/2 | 4@1-1/2                               | 4@1-1/2 | 4@1-1/2 |
| 1500            | 8                      | 3-5/8                         | 15-1/2  | 19      | 1-5/8             | 12                   | 7-13/16              | 5-1/2                      | 9     | 5-1/2 | 4@1-1/2                               | 4@1-1/2 | 4@1-1/2 |
| 1500            | 10                     | 4-1/4                         | 19      | 23      | 1-7/8             | 12                   | 9-5/8                | 7                          | 11    | 7     | 4@2                                   | 4@2     | 4@2     |
| 1500            | 12                     | 4-7/8                         | 22-1/4  | 26-1/2  | 2                 | 16                   | 11-5/8               | 7                          | 11    | 7     | 4@2                                   | 4@2     | 4@2     |
| 1500            | 14                     | 5-1/4                         | 25      | 29-1/2  | 2-1/4             | 16                   | 12-1/2               | 7                          | 11    | 7     | 4@2                                   | 4@2     | 4@2     |
| 1500            | 16                     | 5-3/4                         | 27-3/4  | 32-1/2  | 2-1/2             | 16                   | 14-1/2               | 9                          | 13    | 9     | 4@2                                   | 4@2     | 4@2     |

**Fuel Gas Heaters**  
Type 3FG (6FG)(9FG)(15FG)  
300#, 600#, 900#, and 1500# Ratings

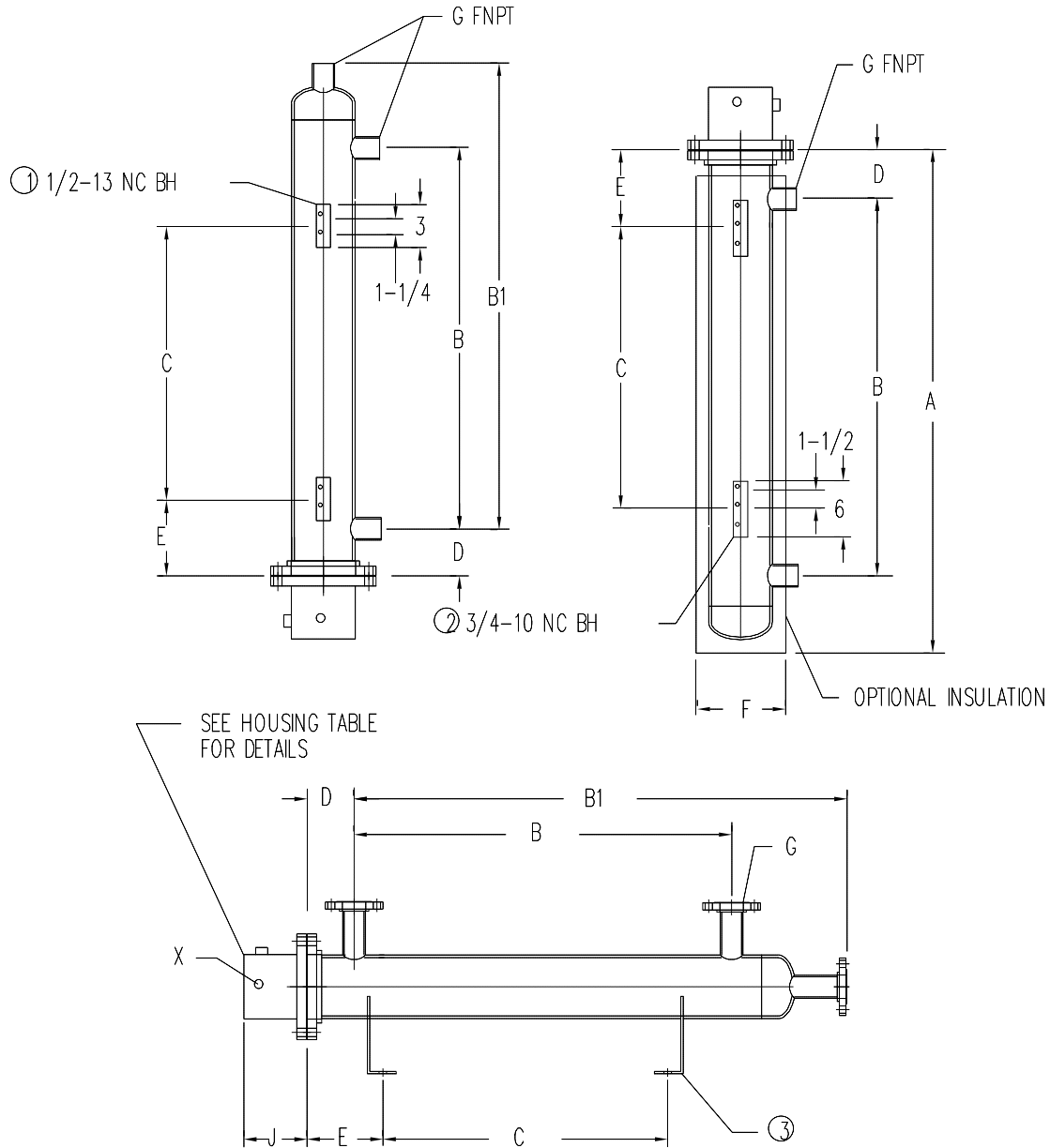


Gaumer Drawing No. FG-300  
(Dimension Option Detail)

# Fuel Gas Heaters

## Type 3FG (6FG)(9FG)(15FG)

### 300#, 600#, 900#, and 1500# Ratings



- ① FOR SIZES 3" THUR 6"
- ② FOR SIZES 8" THRU 14"
- ③ SADDLES OPTIONAL

**Fuel Gas Heaters**  
**Type 3FG (6FG)(9FG)(15FG)**  
**300#, 600#, 900#, and 1500# Ratings**

**Watt Density: 23**

**Diameter (in.): 3**

**Watt Density (w/sq.in.): 23**

| Gauger Fuel Gas Heater Dwg. No. FG-300 Dim. (Inches) A, B, B1, C, D, E, F, G > |    |      |         |     | D=4     |       | Nozzles Option 11 |         | Nozzles Option 12 |         | Nozzles Option 13 |        | Nozzles Option 14 |        |
|--|----|------|---------|-----|---------|-------|-------------------|---------|-------------------|---------|-------------------|--------|-------------------|--------|
|  |    |      |         |     | E=6-1/2 |       |                   |         |                   |         |                   |        |                   |        |
| Catalog Number   | kW | Volt | A       | B   | C       | F     | B1                | G1(in.) | B1                | G2(in.) | B1                | G3(in) | B1                | G4(in) |
| 3FG3F3N106M4   | 19 | 480  | 112-1/2 | 102 | 97      | 6-1/2 | 109               | 1 FNPT  | 111               | 1 300#  | 113               | 2 300# | 114               | 3 300# |
| 3FG3F3N120M4   | 24 | 480  | 126-1/2 | 116 | 111     | 6-1/2 | 123               | 1 FNPT  | 125               | 1 300#  | 127               | 2 300# | 128               | 3 300# |
| 3FG3F3N140M4   | 26 | 480  | 146-1/2 | 136 | 131     | 6-1/2 | 143               | 1 FNPT  | 145               | 1 300#  | 147               | 2 300# | 148               | 3 300# |
| 3FG3F3N160M4   | 30 | 480  | 166-1/2 | 156 | 151     | 6-1/2 | 163               | 1 FNPT  | 165               | 1 300#  | 167               | 2 300# | 168               | 3 300# |

**Diameter (in.): 4**

**Watt Density (w/sq.in.): 23**

| Gauger Fuel Gas Heater Dwg. No. FG-300 Dim. (Inches) A, B, B1, C, D, E, F, G > |    |      |     |     | D=4     |       | Nozzles Option 11 |         | Nozzles Option 12 |         | Nozzles Option 13 |        | Nozzles Option 14 |        |
|--|----|------|-----|-----|---------|-------|-------------------|---------|-------------------|---------|-------------------|--------|-------------------|--------|
|  |    |      |     |     | E=7-1/2 |       |                   |         |                   |         |                   |        |                   |        |
| Catalog Number   | kW | Volt | A   | B   | C       | F     | B1                | G1(in.) | B1                | G2(in.) | B1                | G3(in) | B1                | G4(in) |
| 3FG4F6N106M4   | 38 | 480  | 113 | 102 | 97      | 7-1/2 | 110               | 1 FNPT  | 111               | 1 300#  | 113               | 2 300# | 114               | 3 300# |
| 3FG4F6N120M4   | 47 | 480  | 127 | 116 | 111     | 7-1/2 | 124               | 1 FNPT  | 125               | 1 300#  | 127               | 2 300# | 128               | 3 300# |
| 3FG4F6N140M4   | 53 | 480  | 147 | 136 | 131     | 7-1/2 | 144               | 1 FNPT  | 145               | 1 300#  | 147               | 2 300# | 148               | 3 300# |
| 3FG4F6N160M4   | 60 | 480  | 167 | 156 | 151     | 7-1/2 | 164               | 1 FNPT  | 165               | 1 300#  | 167               | 2 300# | 168               | 3 300# |

**Diameter (in.): 5**

**Watt Density (w/sq.in.): 23**

| Gauger Fuel Gas Heater Dwg. No. FG-300 Dim. (Inches) A, B, B1, C, D, E, F, G > |    |      |         |         | D=4-1/2 |       | Nozzles Option 11 |         | Nozzles Option 12 |            | Nozzles Option 13 |        | Nozzles Option 14 |        |
|--|----|------|---------|---------|---------|-------|-------------------|---------|-------------------|------------|-------------------|--------|-------------------|--------|
|  |    |      |         |         | E=8-1/2 |       |                   |         |                   |            |                   |        |                   |        |
| Catalog Number   | kW | Volt | A       | B       | C       | F     | B1                | G1(in.) | B1                | G2(in.)    | B1                | G3(in) | B1                | G4(in) |
| 3FG5F6N106M4   | 38 | 480  | 113-3/4 | 101-1/2 | 94-3/4  | 8-1/2 | 111               | 2 FNPT  | 112               | 1-1/2 300# | 113               | 2 300# | 114               | 3 300# |
| 3FG5F6N120M4   | 47 | 480  | 127-3/4 | 115-1/2 | 108-3/4 | 8-1/2 | 125               | 2 FNPT  | 126               | 1-1/2 300# | 127               | 2 300# | 128               | 3 300# |
| 3FG5F6N140M4   | 53 | 480  | 147-3/4 | 135-1/2 | 128-3/4 | 8-1/2 | 145               | 2 FNPT  | 146               | 1-1/2 300# | 147               | 2 300# | 148               | 3 300# |
| 3FG5F6N160M4   | 60 | 480  | 167-3/4 | 155-1/2 | 148-3/4 | 8-1/2 | 165               | 2 FNPT  | 166               | 1-1/2 300# | 167               | 2 300# | 168               | 3 300# |
| 3FG5F9N106M4   | 57 | 480  | 113-3/4 | 101-1/2 | 94-3/4  | 8-1/2 | 111               | 2 FNPT  | 112               | 1-1/2 300# | 113               | 2 300# | 114               | 3 300# |
| 3FG5F9N120M4   | 70 | 480  | 127-3/4 | 115-1/2 | 108-3/4 | 8-1/2 | 125               | 2 FNPT  | 126               | 1-1/2 300# | 127               | 2 300# | 128               | 3 300# |
| 3FG5F9N140M4   | 79 | 480  | 147-3/4 | 135-1/2 | 128-3/4 | 8-1/2 | 145               | 2 FNPT  | 146               | 1-1/2 300# | 147               | 2 300# | 148               | 3 300# |
| 3FG5F9N160M4   | 91 | 480  | 167-3/4 | 155-1/2 | 148-3/4 | 8-1/2 | 165               | 2 FNPT  | 166               | 1-1/2 300# | 167               | 2 300# | 168               | 3 300# |

**Diameter (in.): 6**

**Watt Density (w/sq.in.): 23**

| Gauger Fuel Gas Heater Dwg. No. FG-300 Dim. (Inches) A, B, B1, C, D, E, F, G > |     |      |         |         | D=4-1/2 |       | Nozzles Option 11 |         | Nozzles Option 12 |            | Nozzles Option 13 |        | Nozzles Option 14 |        |
|--|-----|------|---------|---------|---------|-------|-------------------|---------|-------------------|------------|-------------------|--------|-------------------|--------|
|  |     |      |         |         | E=9-5/8 |       |                   |         |                   |            |                   |        |                   |        |
| Catalog Number   | kW  | Volt | A       | B       | C       | F     | B1                | G1(in.) | B1                | G2(in.)    | B1                | G3(in) | B1                | G4(in) |
| 3FG6F12N106M4  | 76  | 480  | 114-1/4 | 101-1/2 | 94-3/4  | 9-5/8 | 112               | 2 FNPT  | 112               | 1-1/2 300# | 114               | 2 300# | 115               | 3 300# |
| 3FG6F12N120M4  | 94  | 480  | 128-1/4 | 115-1/2 | 108-3/4 | 9-5/8 | 126               | 2 FNPT  | 126               | 1-1/2 300# | 128               | 2 300# | 129               | 3 300# |
| 3FG6F12N140M4  | 105 | 480  | 148-1/4 | 135-1/2 | 128-3/4 | 9-5/8 | 146               | 2 FNPT  | 146               | 1-1/2 300# | 148               | 2 300# | 149               | 3 300# |
| 3FG6F12N160M4  | 121 | 480  | 168-1/4 | 155-1/2 | 148-3/4 | 9-5/8 | 166               | 2 FNPT  | 166               | 1-1/2 300# | 168               | 2 300# | 169               | 3 300# |
| 3FG6F15N106M4  | 95  | 480  | 114-1/4 | 101-1/2 | 94-3/4  | 9-5/8 | 112               | 2 FNPT  | 112               | 1-1/2 300# | 114               | 2 300# | 115               | 3 300# |
| 3FG6F15N120M4  | 117 | 480  | 128-1/4 | 115-1/2 | 108-3/4 | 9-5/8 | 126               | 2 FNPT  | 126               | 1-1/2 300# | 128               | 2 300# | 129               | 3 300# |

# Fuel Gas Heaters

## Type 3FG (6FG)(9FG)(15FG)

### 300#, 600#, 900#, and 1500# Ratings

**Diameter (in.): 6**

**Watt Density (w/sq.in.): 23**

| Gauger Fuel Gas Heater Dwg. No. FG-300 Dim. (Inches) A, B, B1, C, D, E, F, G > |     |      |         |         |         |       | D=4-1/2<br>E=9-5/8 |         | Nozzles Option 11 |            | Nozzles Option 12 |        | Nozzles Option 13 |        | Nozzles Option 14 |  |
|--|-----|------|---------|---------|---------|-------|--------------------|---------|-------------------|------------|-------------------|--------|-------------------|--------|-------------------|--|
| Catalog Number   | kW  | Volt | A       | B       | C       | F     | B1                 | G1(in.) | B1                | G2(in.)    | B1                | G3(in) | B1                | G4(in) |                   |  |
| 3FG6F15N140M4  | 131 | 480  | 148-1/4 | 135-1/2 | 128-3/4 | 9-5/8 | 146                | 2 FNPT  | 146               | 1-1/2 300# | 148               | 2 300# | 149               | 3 300# |                   |  |
| 3FG6F15N160M4  | 151 | 480  | 168-1/4 | 155-1/2 | 148-3/4 | 9-5/8 | 166                | 2 FNPT  | 166               | 1-1/2 300# | 168               | 2 300# | 169               | 3 300# |                   |  |

**Diameter (in.): 8**

**Watt Density (w/sq.in.): 23**

| Gauger Fuel Gas Heater Dwg. No. FG-300 Dim. (Inches) A, B, B1, C, D, E, F, G > |     |      |         |     |         |        | D=5<br>E=11-5/8 |         | Nozzles Option 11 |            | Nozzles Option 12 |        | Nozzles Option 13 |        | Nozzles Option 14 |  |
|--|-----|------|---------|-----|---------|--------|-----------------|---------|-------------------|------------|-------------------|--------|-------------------|--------|-------------------|--|
| Catalog Number   | kW  | Volt | A       | B   | C       | F      | B1              | G1(in.) | B1                | G2(in.)    | B1                | G3(in) | B1                | G4(in) |                   |  |
| 3FG8F18N106M4  | 114 | 480  | 115-1/4 | 101 | 93-1/4  | 11-5/8 | 112             | 2 FNPT  | 113               | 1-1/2 300# | 114               | 2 300# | 115               | 3 300# |                   |  |
| 3FG8F18N120M4  | 140 | 480  | 123-1/4 | 115 | 107-1/4 | 11-5/8 | 126             | 2 FNPT  | 127               | 1-1/2 300# | 128               | 2 300# | 129               | 3 300# |                   |  |
| 3FG8F18N140M4  | 157 | 480  | 149-1/4 | 135 | 127-1/4 | 11-5/8 | 146             | 2 FNPT  | 147               | 1-1/2 300# | 148               | 2 300# | 149               | 3 300# |                   |  |
| 3FG8F18N160M4  | 181 | 480  | 169-1/4 | 155 | 147-1/4 | 11-5/8 | 166             | 2 FNPT  | 167               | 1-1/2 300# | 168               | 2 300# | 169               | 3 300# |                   |  |
| 3FG8F24N106M4  | 151 | 480  | 115-1/4 | 101 | 93-1/4  | 11-5/8 | 112             | 2 FNPT  | 113               | 1-1/2 300# | 114               | 2 300# | 115               | 3 300# |                   |  |
| 3FG8F24N120M4  | 188 | 480  | 123-1/4 | 115 | 107-1/4 | 11-5/8 | 126             | 2 FNPT  | 127               | 1-1/2 300# | 128               | 2 300# | 129               | 3 300# |                   |  |
| 3FG8F24N140M4  | 210 | 480  | 149-1/4 | 135 | 127-1/4 | 11-5/8 | 146             | 2 FNPT  | 147               | 1-1/2 300# | 148               | 2 300# | 149               | 3 300# |                   |  |
| 3FG8F24N160M4  | 242 | 480  | 169-1/4 | 155 | 147-1/4 | 11-5/8 | 166             | 2 FNPT  | 167               | 1-1/2 300# | 168               | 2 300# | 169               | 3 300# |                   |  |

**Diameter (in.): 10**

**Watt Density (w/sq.in.): 23**

| Gauger Fuel Gas Heater Dwg. No. FG-300 Dim. (Inches) A, B, B1, C, D, E, F, G > |     |      |         |         |         |    | D=6-3/4<br>E=15 |         | Nozzles Option 11 |         | Nozzles Option 12 |        | Nozzles Option 13 |        | Nozzles Option 14 |  |
|--|-----|------|---------|---------|---------|----|-----------------|---------|-------------------|---------|-------------------|--------|-------------------|--------|-------------------|--|
| Catalog Number   | kW  | Volt | A       | B       | C       | F  | B1              | G1(in.) | B1                | G2(in.) | B1                | G3(in) | B1                | G4(in) |                   |  |
| 3FG10F27N106M4   | 170 | 480  | 117-1/4 | 99-1/4  | 100-3/4 | 15 | 114             | 3 300#  | 115               | 4 300#  | 116               | 6 300# | 117               | 8 300# |                   |  |
| 3FG10F27N120M4   | 210 | 480  | 131-1/4 | 113-1/4 | 114-3/4 | 15 | 128             | 3 300#  | 129               | 4 300#  | 130               | 6 300# | 131               | 8 300# |                   |  |
| 3FG10F36N106M4   | 227 | 480  | 117-1/4 | 99-1/4  | 100-3/4 | 15 | 114             | 3 300#  | 115               | 4 300#  | 116               | 6 300# | 117               | 8 300# |                   |  |
| 3FG10F36N120M4   | 281 | 480  | 131-1/4 | 113-1/4 | 114-3/4 | 15 | 128             | 3 300#  | 129               | 4 300#  | 130               | 6 300# | 131               | 8 300# |                   |  |
| 3FG10F36N140M4   | 315 | 480  | 151-1/4 | 133-1/4 | 134-3/4 | 15 | 149             | 3 300#  | 149               | 4 300#  | 150               | 6 300# | 151               | 8 300# |                   |  |
| 3FG10F36N160M4   | 362 | 480  | 171-1/4 | 153-1/4 | 154-3/4 | 15 | 168             | 3 300#  | 169               | 4 300#  | 170               | 6 300# | 171               | 8 300# |                   |  |

**Diameter (in.): 12**

**Watt Density (w/sq.in.): 23**

| Gauger Fuel Gas Heater Dwg. No. FG-300 Dim. (Inches) A, B, B1, C, D, E, F, G > |     |      |         |     |         |    | D=6<br>E=16 |         | Nozzles Option 11 |         | Nozzles Option 12 |        | Nozzles Option 13 |        | Nozzles Option 14 |  |
|--|-----|------|---------|-----|---------|----|-------------|---------|-------------------|---------|-------------------|--------|-------------------|--------|-------------------|--|
| Catalog Number   | kW  | Volt | A       | B   | C       | F  | B1          | G1(in.) | B1                | G2(in.) | B1                | G3(in) | B1                | G4(in) |                   |  |
| 3FG12F36N106M4   | 227 | 480  | 117-1/4 | 100 | 91-1/4  | 16 | 115         | 3 300#  | 116               | 4 300#  | 117               | 6 300# | 118               | 8 300# |                   |  |
| 3FG12F36N120M4   | 280 | 480  | 131-1/4 | 114 | 105-1/4 | 16 | 129         | 3 300#  | 130               | 4 300#  | 131               | 6 300# | 132               | 8 300# |                   |  |
| 3FG12F36N140M4   | 315 | 480  | 151-1/4 | 134 | 129-1/4 | 16 | 149         | 3 300#  | 150               | 4 300#  | 151               | 6 300# | 152               | 8 300# |                   |  |
| 3FG12F36N160M4   | 362 | 480  | 171-1/4 | 154 | 145-1/4 | 16 | 169         | 3 300#  | 170               | 4 300#  | 171               | 6 300# | 172               | 8 300# |                   |  |
| 3FG12F48N106M4   | 303 | 480  | 117-1/4 | 100 | 91-1/4  | 16 | 115         | 3 300#  | 116               | 4 300#  | 117               | 6 300# | 118               | 8 300# |                   |  |
| 3FG12F48N120M4   | 375 | 480  | 131-1/4 | 114 | 105-1/4 | 16 | 129         | 3 300#  | 130               | 4 300#  | 131               | 6 300# | 132               | 8 300# |                   |  |
| 3FG12F48N140M4   | 414 | 480  | 151-1/4 | 134 | 129-1/4 | 16 | 149         | 3 300#  | 150               | 4 300#  | 151               | 6 300# | 152               | 8 300# |                   |  |
| 3FG12F48N160M4   | 476 | 480  | 171-1/4 | 154 | 145-1/4 | 16 | 169         | 3 300#  | 170               | 4 300#  | 171               | 6 300# | 172               | 8 300# |                   |  |

# Fuel Gas Heaters

## Type 3FG (6FG)(9FG)(15FG)

### 300#, 600#, 900#, and 1500# Ratings

**Diameter (in.): 14**

**Watt Density (w/sq.in.): 23**

| Gauger Fuel Gas Heater Dwg. No. FG-300 Dim. (Inches) A, B, B1, C, D, E, F, G > |     |      |         |     |         |    | D=8<br>E=17 |         | Nozzles Option 11 |         | Nozzles Option 12 |        | Nozzles Option 13 |        | Nozzles Option 14 |  |
|--|-----|------|---------|-----|---------|----|-------------|---------|-------------------|---------|-------------------|--------|-------------------|--------|-------------------|--|
| Catalog Number   | kW  | Volt | A       | B   | C       | F  | B1          | G1(in.) | B1                | G2(in.) | B1                | G3(in) | B1                | G4(in) |                   |  |
| 3FG14F48N140M4   | 420 | 480  | 151-3/4 | 134 | 129-1/4 | 17 | 150         | 3 300#  | 151               | 4 300#  | 152               | 6 300# | 153               | 8 300# |                   |  |
| 3FG14F48N160M4   | 483 | 480  | 171-1/4 | 154 | 145-1/4 | 17 | 170         | 3 300#  | 171               | 4 300#  | 172               | 6 300# | 173               | 8 300# |                   |  |
| 3FG14F54N106M4   | 340 | 480  | 117-3/4 | 100 | 91-1/4  | 17 | 116         | 3 300#  | 117               | 4 300#  | 118               | 6 300# | 119               | 8 300# |                   |  |
| 3FG14F54N120M4   | 421 | 480  | 131-3/4 | 114 | 105-1/4 | 17 | 130         | 3 300#  | 131               | 4 300#  | 132               | 6 300# | 133               | 8 300# |                   |  |
| 3FG14F54N140M4   | 472 | 480  | 151-3/4 | 134 | 129-1/4 | 17 | 150         | 3 300#  | 151               | 4 300#  | 152               | 6 300# | 153               | 8 300# |                   |  |
| 3FG14F54N160M4   | 542 | 480  | 171-1/4 | 154 | 145-1/4 | 17 | 170         | 3 300#  | 171               | 4 300#  | 172               | 6 300# | 173               | 8 300# |                   |  |
| 3FG14F60N106M4   | 378 | 480  | 117-3/4 | 100 | 91-1/4  | 17 | 116         | 3 300#  | 117               | 4 300#  | 118               | 6 300# | 119               | 8 300# |                   |  |
| 3FG14F60N120M4   | 468 | 480  | 131-3/4 | 114 | 105-1/4 | 17 | 130         | 3 300#  | 131               | 4 300#  | 132               | 6 300# | 133               | 8 300# |                   |  |
| 3FG14F60N140M4   | 525 | 480  | 151-3/4 | 134 | 129-1/4 | 17 | 150         | 3 300#  | 151               | 4 300#  | 152               | 6 300# | 153               | 8 300# |                   |  |
| 3FG14F60N160M4   | 603 | 480  | 171-1/4 | 154 | 145-1/4 | 17 | 170         | 3 300#  | 171               | 4 300#  | 172               | 6 300# | 173               | 8 300# |                   |  |
| 3FG14F72N106M4   | 454 | 480  | 117-3/4 | 100 | 91-1/4  | 17 | 116         | 3 300#  | 117               | 4 300#  | 118               | 6 300# | 119               | 8 300# |                   |  |
| 3FG14F72N120M4   | 562 | 480  | 131-3/4 | 114 | 105-1/4 | 17 | 130         | 3 300#  | 131               | 4 300#  | 132               | 6 300# | 133               | 8 300# |                   |  |
| 3FG14F72N140M4   | 630 | 480  | 151-3/4 | 134 | 129-1/4 | 17 | 150         | 3 300#  | 151               | 4 300#  | 152               | 6 300# | 153               | 8 300# |                   |  |
| 3FG14F72N160M4   | 724 | 480  | 171-1/4 | 154 | 145-1/4 | 17 | 170         | 3 300#  | 171               | 4 300#  | 172               | 6 300# | 173               | 8 300# |                   |  |

**Diameter (in.): 16**

**Watt Density (w/sq.in.): 23**

| Gauger Fuel Gas Heater Dwg. No. FG-300 Dim. (Inches) A, B, B1, C, D, E, F, G > |     |      |         |         |         |    | D=8-1/2<br>E=19 |         | Nozzles Option 11 |         | Nozzles Option 12 |        | Nozzles Option 13 |        | Nozzles Option 14 |  |
|--|-----|------|---------|---------|---------|----|-----------------|---------|-------------------|---------|-------------------|--------|-------------------|--------|-------------------|--|
| Catalog Number   | kW  | Volt | A       | B       | C       | F  | B1              | G1(in.) | B1                | G2(in.) | B1                | G3(in) | B1                | G4(in) |                   |  |
| 3FG16F84N140M4   | 735 | 480  | 154-1/4 | 131-1/2 | 123-1/4 | 19 | 148             | 3 300#  | 149               | 4 300#  | 150               | 6 300# | 151               | 8 300# |                   |  |
| 3FG16F84N160M4   | 844 | 480  | 174-1/4 | 151-1/2 | 143-1/4 | 19 | 168             | 3 300#  | 169               | 4 300#  | 170               | 6 300# | 171               | 8 300# |                   |  |

**Diameter (in.): 18**

**Watt Density (w/sq.in.): 23**

| Gauger Fuel Gas Heater Dwg. No. FG-300 Dim. (Inches) A, B, B1, C, D, E, F, G > |      |      |         |         |     |    | D=9-1/2<br>E=21 |         | Nozzles Option 11 |         | Nozzles Option 12 |        | Nozzles Option 13 |        | Nozzles Option 14 |  |
|--|------|------|---------|---------|-----|----|-----------------|---------|-------------------|---------|-------------------|--------|-------------------|--------|-------------------|--|
| Catalog Number   | kW   | Volt | A       | B       | C   | F  | B1              | G1(in.) | B1                | G2(in.) | B1                | G3(in) | B1                | G4(in) |                   |  |
| 3FG18F108N140M4  | 945  | 480  | 156-1/2 | 130-1/2 | 120 | 21 | 147             | 3 300#  | 148               | 4 300#  | 149               | 6 300# | 151               | 8 300# |                   |  |
| 3FG18F108N160M4  | 1086 | 480  | 176-1/2 | 150-1/2 | 140 | 21 | 167             | 3 300#  | 168               | 4 300#  | 169               | 6 300# | 171               | 8 300# |                   |  |

**Diameter (in.): 20**

**Watt Density (w/sq.in.): 23**

| Gauger Fuel Gas Heater Dwg. No. FG-300 Dim. (Inches) A, B, B1, C, D, E, F, G > |      |      |         |         |     |    | D=9-3/4<br>E=23 |         | Nozzles Option 11 |         | Nozzles Option 12 |        | Nozzles Option 13 |        | Nozzles Option 14 |  |
|--|------|------|---------|---------|-----|----|-----------------|---------|-------------------|---------|-------------------|--------|-------------------|--------|-------------------|--|
| Catalog Number   | kW   | Volt | A       | B       | C   | F  | B1              | G1(in.) | B1                | G2(in.) | B1                | G3(in) | B1                | G4(in) |                   |  |
| 3FG20F144N140M4  | 1260 | 480  | 157-1/2 | 130-1/4 | 120 | 23 | 149             | 3 300#  | 150               | 4 300#  | 151               | 6 300# | 153               | 8 300# |                   |  |
| 3FG20F144N160M4  | 1447 | 480  | 177-1/2 | 150-1/4 | 140 | 23 | 169             | 3 300#  | 170               | 4 300#  | 171               | 6 300# | 173               | 8 300# |                   |  |

**Fuel Gas Heaters**  
 Type 3FG (6FG)(9FG)(15FG)  
 300#, 600#, 900#, and 1500# Ratings

**Diameter (in.): 24**

**Watt Density (w/sq.in.): 23**

| Gaumer Fuel Gas Heater Dwg. No. FG-300 Dim.<br>(Inches) A, B, B1, C, D, E, F, G > |      |      |     |         | D=10-1/2<br>E=27 |    | Nozzles<br>Option 11 |         | Nozzles<br>Option 12 |         | Nozzles<br>Option 13 |         | Nozzles<br>Option 14 |         |
|---|------|------|-----|---------|------------------|----|----------------------|---------|----------------------|---------|----------------------|---------|----------------------|---------|
| Catalog Number  | kW   | Volt | A   | B       | C                | F  | B1                   | G1(in.) | B1                   | G2(in.) | B1                   | G3(in)  | B1                   | G4(in)  |
| 3FG24F192N140M4   | 1680 | 480  | 160 | 129-1/2 | 119              | 27 | 150                  | 6 300#  | 151                  | 8 300#  | 152                  | 10 300# | 154                  | 12 300# |
| 3FG24F192N160M4   | 1930 | 480  | 180 | 149-1/2 | 139              | 27 | 170                  | 6 300#  | 171                  | 8 300#  | 172                  | 10 300# | 174                  | 12 300# |

**Fuel Gas Heaters**  
**Type 3FG (6FG)(9FG)(15FG)**  
**300#, 600#, 900#, and 1500# Ratings**

**Watt Density: 20**

**Diameter (in.): 3**

**Watt Density (w/sq.in.): 20**

| Gauger Fuel Gas Heater Dwg. No. FG-300 Dim. (Inches) A, B, B1, C, D, E, F, G > |     |      |         |     | D=4<br>E=6-1/2 |       | Nozzles Option 11 |         | Nozzles Option 12 |         | Nozzles Option 13 |        | Nozzles Option 14 |        |
|--|-----|------|---------|-----|----------------|-------|-------------------|---------|-------------------|---------|-------------------|--------|-------------------|--------|
| Catalog Number   | kW  | Volt | A       | B   | C              | F     | B1                | G1(in.) | B1                | G2(in.) | B1                | G3(in) | B1                | G4(in) |
| 3FG3F3N33B4Y   | 5   | 480  | 39-1/2  | N/A | 24             | 6-1/2 | 36                | 1 FNPT  | 38                | 1 300#  | 40                | 2 300# | 41                | 3 300# |
| 3FG3F3N43B4Y   | 6.7 | 480  | 49-1/2  | N/A | 34             | 6-1/2 | 46                | 1 FNPT  | 48                | 1 300#  | 50                | 2 300# | 51                | 3 300# |
| 3FG3F3N52B4Y   | 8.3 | 480  | 54-1/2  | N/A | 39             | 6-1/2 | 55                | 1 FNPT  | 57                | 1 300#  | 59                | 2 300# | 60                | 3 300# |
| 3FG3F3N61B4Y   | 10  | 480  | 67-1/2  | N/A | 52             | 6-1/2 | 64                | 1 FNPT  | 66                | 1 300#  | 68                | 2 300# | 69                | 3 300# |
| 3FG3F3N88B4Y   | 15  | 480  | 94-1/2  | N/A | 79             | 6-1/2 | 91                | 1 FNPT  | 93                | 1 300#  | 95                | 2 300# | 96                | 3 300# |
| 3FG3F3N106B4Y  | 17  | 480  | 112-1/2 | N/A | 97             | 6-1/2 | 109               | 1 FNPT  | 111               | 1 300#  | 113               | 2 300# | 114               | 3 300# |
| 3FG3F3N120B4Y  | 19  | 480  | 126-1/2 | N/A | 111            | 6-1/2 | 123               | 1 FNPT  | 125               | 1 300#  | 127               | 2 300# | 128               | 3 300# |

**Diameter (in.): 4**

**Watt Density (w/sq.in.): 20**

| Gauger Fuel Gas Heater Dwg. No. FG-300 Dim. (Inches) A, B, B1, C, D, E, F, G > |    |      |     |     | D=4<br>E=7-1/2 |       | Nozzles Option 11 |         | Nozzles Option 12 |         | Nozzles Option 13 |        | Nozzles Option 14 |        |
|--|----|------|-----|-----|----------------|-------|-------------------|---------|-------------------|---------|-------------------|--------|-------------------|--------|
| Catalog Number   | kW | Volt | A   | B   | C              | F     | B1                | G1(in.) | B1                | G2(in.) | B1                | G3(in) | B1                | G4(in) |
| 3FG4F6N33B4Y   | 10 | 480  | 40  | 29  | 24             | 7-1/2 | 37                | 1 FNPT  | 38                | 1 300#  | 40                | 2 300# | 41                | 3 300# |
| 3FG4F6N43B4Y   | 13 | 480  | 50  | 39  | 34             | 7-1/2 | 47                | 1 FNPT  | 48                | 1 300#  | 50                | 2 300# | 51                | 3 300# |
| 3FG4F6N52B4Y   | 17 | 480  | 59  | 48  | 43             | 7-1/2 | 56                | 1 FNPT  | 57                | 1 300#  | 59                | 2 300# | 60                | 3 300# |
| 3FG4F6N61B4Y   | 20 | 480  | 68  | 57  | 52             | 7-1/2 | 65                | 1 FNPT  | 66                | 1 300#  | 68                | 2 300# | 69                | 3 300# |
| 3FG4F6N88B4Y   | 30 | 480  | 95  | 84  | 79             | 7-1/2 | 93                | 1 FNPT  | 94                | 1 300#  | 96                | 2 300# | 97                | 3 300# |
| 3FG4F6N106B4Y  | 33 | 480  | 113 | 102 | 97             | 7-1/2 | 110               | 1 FNPT  | 111               | 1 300#  | 113               | 2 300# | 114               | 3 300# |
| 3FG4F6N120B4Y  | 38 | 480  | 127 | 116 | 111            | 7-1/2 | 124               | 1 FNPT  | 125               | 1 300#  | 127               | 2 300# | 128               | 3 300# |

**Diameter (in.): 5**

**Watt Density (w/sq.in.): 20**

| Gauger Fuel Gas Heater Dwg. No. FG-300 Dim. (Inches) A, B, B1, C, D, E, F, G > |    |      |         |         | D=4-1/2<br>E=8-1/2 |       | Nozzles Option 11 |         | Nozzles Option 12 |            | Nozzles Option 13 |        | Nozzles Option 14 |        |
|--|----|------|---------|---------|--------------------|-------|-------------------|---------|-------------------|------------|-------------------|--------|-------------------|--------|
| Catalog Number   | kW | Volt | A       | B       | C                  | F     | B1                | G1(in.) | B1                | G2(in.)    | B1                | G3(in) | B1                | G4(in) |
| 3FG5F6N33B4Y   | 10 | 480  | 40-3/4  | 28-1/2  | 21-3/4             | 8-1/2 | 38                | 2 FNPT  | 39                | 1-1/2 300# | 40                | 2 300# | 41                | 3 300# |
| 3FG5F6N43B4Y   | 13 | 480  | 50-3/4  | 38-1/2  | 31-3/4             | 8-1/2 | 48                | 2 FNPT  | 49                | 1-1/2 300# | 50                | 2 300# | 51                | 3 300# |
| 3FG5F6N52B4Y   | 17 | 480  | 55-3/4  | 47-1/2  | 36-3/4             | 8-1/2 | 57                | 2 FNPT  | 58                | 1-1/2 300# | 59                | 2 300# | 60                | 3 300# |
| 3FG5F6N61B4Y   | 20 | 480  | 68-3/4  | 56-1/2  | 49-3/4             | 8-1/2 | 66                | 2 FNPT  | 67                | 1-1/2 300# | 68                | 2 300# | 69                | 3 300# |
| 3FG5F6N88B4Y   | 30 | 480  | 95-3/4  | 88-1/2  | 71-3/4             | 8-1/2 | 98                | 2 FNPT  | 99                | 1-1/2 300# | 100               | 2 300# | 101               | 3 300# |
| 3FG5F6N106B4Y  | 33 | 480  | 113-3/4 | 101-1/2 | 94-3/4             | 8-1/2 | 111               | 2 FNPT  | 112               | 1-1/2 300# | 113               | 2 300# | 114               | 3 300# |
| 3FG5F6N120B4Y  | 38 | 480  | 127-3/4 | 115-1/2 | 108-3/4            | 8-1/2 | 125               | 2 FNPT  | 126               | 1-1/2 300# | 127               | 2 300# | 128               | 3 300# |
| 3FG5F9N33B4Y   | 15 | 480  | 40-3/4  | 28-1/2  | 21-3/4             | 8-1/2 | 38                | 2 FNPT  | 39                | 1-1/2 300# | 40                | 2 300# | 41                | 3 300# |
| 3FG5F9N43B4Y   | 20 | 480  | 50-3/4  | 38-1/2  | 31-3/4             | 8-1/2 | 48                | 2 FNPT  | 49                | 1-1/2 300# | 50                | 2 300# | 51                | 3 300# |
| 3FG5F9N52B4Y   | 25 | 480  | 59-3/4  | 47-1/2  | 40-3/4             | 8-1/2 | 57                | 2 FNPT  | 58                | 1-1/2 300# | 59                | 2 300# | 60                | 3 300# |
| 3FG5F9N61B4Y   | 30 | 480  | 68-3/4  | 56-1/2  | 49-3/4             | 8-1/2 | 66                | 2 FNPT  | 67                | 1-1/2 300# | 68                | 2 300# | 69                | 3 300# |
| 3FG5F9N88B4Y   | 45 | 480  | 95-3/4  | 88-1/2  | 71-3/4             | 8-1/2 | 98                | 2 FNPT  | 99                | 1-1/2 300# | 100               | 2 300# | 101               | 3 300# |
| 3FG5F9N106B4Y  | 50 | 480  | 113-3/4 | 101-1/2 | 94-3/4             | 8-1/2 | 111               | 2 FNPT  | 112               | 1-1/2 300# | 113               | 2 300# | 114               | 3 300# |
| 3FG5F9N120B4Y  | 57 | 480  | 127-3/4 | 115-1/2 | 108-3/4            | 8-1/2 | 125               | 2 FNPT  | 126               | 1-1/2 300# | 127               | 2 300# | 128               | 3 300# |

# Fuel Gas Heaters

## Type 3FG (6FG)(9FG)(15FG)

### 300#, 600#, 900#, and 1500# Ratings

**Diameter (in.): 6**

**Watt Density (w/sq.in.): 20**

| Gauger Fuel Gas Heater Dwg. No. FG-300 Dim. (Inches) A, B, B1, C, D, E, F, G > |    |      |         |         |         |       | D=4-1/2 |         | Nozzles Option 11 |            | Nozzles Option 12 |        | Nozzles Option 13 |        | Nozzles Option 14 |  |
|--|----|------|---------|---------|---------|-------|---------|---------|-------------------|------------|-------------------|--------|-------------------|--------|-------------------|--|
|  |    |      |         |         |         |       | E=9-5/8 |         |                   |            |                   |        |                   |        |                   |  |
| Catalog Number   | kW | Volt | A       | B       | C       | F     | B1      | G1(in.) | B1                | G2(in.)    | B1                | G3(in) | B1                | G4(in) |                   |  |
| 3FG6F12N33B4Y  | 20 | 480  | 41-1/4  | 28-1/2  | 21-3/4  | 9-5/8 | 39      | 2 FNPT  | 39                | 1-1/2 300# | 41                | 2 300# | 42                | 3 300# |                   |  |
| 3FG6F12N43B4Y  | 27 | 480  | 50-1/4  | 38-1/2  | 28-2/4  | 9-5/8 | 49      | 2 FNPT  | 49                | 1-1/2 300# | 51                | 2 300# | 52                | 3 300# |                   |  |
| 3FG6F12N52B4Y  | 33 | 480  | 60-1/4  | 47-1/2  | 40-3/4  | 9-5/8 | 58      | 2 FNPT  | 58                | 1-1/2 300# | 60                | 2 300# | 61                | 3 300# |                   |  |
| 3FG6F12N61B4Y  | 40 | 480  | 69-1/4  | 56-1/2  | 49-3/4  | 9-5/8 | 67      | 2 FNPT  | 67                | 1-1/2 300# | 69                | 2 300# | 70                | 3 300# |                   |  |
| 3FG6F12N88B4Y  | 59 | 480  | 96-1/4  | 83-1/2  | 76-3/4  | 9-5/8 | 94      | 2 FNPT  | 94                | 1-1/2 300# | 96                | 2 300# | 97                | 3 300# |                   |  |
| 3FG6F12N106B4Y   | 67 | 480  | 114-1/4 | 101-1/2 | 94-3/4  | 9-5/8 | 112     | 2 FNPT  | 112               | 1-1/2 300# | 114               | 2 300# | 115               | 3 300# |                   |  |
| 3FG6F12N120B4Y   | 76 | 480  | 128-1/4 | 115-1/2 | 108-3/4 | 9-5/8 | 126     | 2 FNPT  | 126               | 1-1/2 300# | 128               | 2 300# | 129               | 3 300# |                   |  |
| 3FG6F15N33B4Y  | 25 | 480  | 41-1/4  | 28-1/2  | 21-3/4  | 9-5/8 | 39      | 2 FNPT  | 39                | 1-1/2 300# | 41                | 2 300# | 42                | 3 300# |                   |  |
| 3FG6F15N43B4Y  | 33 | 480  | 50-1/4  | 38-1/2  | 28-2/4  | 9-5/8 | 49      | 2 FNPT  | 49                | 1-1/2 300# | 51                | 2 300# | 52                | 3 300# |                   |  |
| 3FG6F15N52B4Y  | 42 | 480  | 55-1/4  | 47-1/2  | 33-3/4  | 9-5/8 | 58      | 2 FNPT  | 58                | 1-1/2 300# | 60                | 2 300# | 61                | 3 300# |                   |  |
| 3FG6F15N61B4Y  | 50 | 480  | 69-1/4  | 56-1/2  | 49-3/4  | 9-5/8 | 67      | 2 FNPT  | 67                | 1-1/2 300# | 69                | 2 300# | 70                | 3 300# |                   |  |
| 3FG6F15N88B4Y  | 74 | 480  | 96-1/4  | 83-1/2  | 76-3/4  | 9-5/8 | 94      | 2 FNPT  | 94                | 1-1/2 300# | 96                | 2 300# | 97                | 3 300# |                   |  |
| 3FG6F15N106B4Y   | 84 | 480  | 114-1/4 | 101-1/2 | 94-3/4  | 9-5/8 | 112     | 2 FNPT  | 112               | 1-1/2 300# | 114               | 2 300# | 115               | 3 300# |                   |  |
| 3FG6F15N120B4Y   | 95 | 480  | 128-1/4 | 115-1/2 | 108-3/4 | 9-5/8 | 126     | 2 FNPT  | 126               | 1-1/2 300# | 128               | 2 300# | 129               | 3 300# |                   |  |

**Diameter (in.): 8**

**Watt Density (w/sq.in.): 20**

| Gauger Fuel Gas Heater Dwg. No. FG-300 Dim. (Inches) A, B, B1, C, D, E, F, G > |     |      |         |        |         |        | D=4-1/2  |         | Nozzles Option 11 |            | Nozzles Option 12 |        | Nozzles Option 13 |        | Nozzles Option 14 |  |
|--|-----|------|---------|--------|---------|--------|----------|---------|-------------------|------------|-------------------|--------|-------------------|--------|-------------------|--|
|  |     |      |         |        |         |        | E=11-5/8 |         |                   |            |                   |        |                   |        |                   |  |
| Catalog Number   | kW  | Volt | A       | B      | C       | F      | B1       | G1(in.) | B1                | G2(in.)    | B1                | G3(in) | B1                | G4(in) |                   |  |
| 3FG8F18N33B4Y  | 30  | 480  | 41-3/4  | 28-1/2 | 21-1/4  | 11-5/8 | 39       | 2 FNPT  | 40                | 1-1/2 300# | 42                | 2 300# | 42                | 3 300# |                   |  |
| 3FG8F18N43B4Y  | 40  | 480  | 51-3/4  | 38-1/2 | 31-1/4  | 11-5/8 | 49       | 2 FNPT  | 50                | 1-1/2 300# | 52                | 2 300# | 52                | 3 300# |                   |  |
| 3FG8F18N52B4Y  | 50  | 480  | 61-1/4  | 47     | 39-1/4  | 11-5/8 | 58       | 2 FNPT  | 59                | 1-1/2 300# | 60                | 2 300# | 61                | 3 300# |                   |  |
| 3FG8F18N61B4Y  | 60  | 480  | 70-1/4  | 56     | 48-1/4  | 11-5/8 | 67       | 2 FNPT  | 68                | 1-1/2 300# | 69                | 2 300# | 70                | 3 300# |                   |  |
| 3FG8F18N88B4Y  | 89  | 480  | 97-1/4  | 83     | 75-1/4  | 11-5/8 | 94       | 2 FNPT  | 95                | 1-1/2 300# | 96                | 2 300# | 97                | 3 300# |                   |  |
| 3FG8F18N106B4Y   | 100 | 480  | 115-1/4 | 101    | 93-1/4  | 11-5/8 | 112      | 2 FNPT  | 113               | 1-1/2 300# | 114               | 2 300# | 115               | 3 300# |                   |  |
| 3FG8F18N120B4Y   | 114 | 480  | 123-1/4 | 115    | 107-1/4 | 11-5/8 | 126      | 2 FNPT  | 127               | 1-1/2 300# | 128               | 2 300# | 129               | 3 300# |                   |  |
| 3FG8F24N33B4Y  | 40  | 480  | 41-3/4  | 28-1/2 | 21-1/4  | 11-5/8 | 39       | 2 FNPT  | 40                | 1-1/2 300# | 42                | 2 300# | 42                | 3 300# |                   |  |
| 3FG8F24N43B4Y  | 53  | 480  | 51-3/4  | 38-1/2 | 31-1/4  | 11-5/8 | 49       | 2 FNPT  | 50                | 1-1/2 300# | 52                | 2 300# | 52                | 3 300# |                   |  |
| 3FG8F24N52B4Y  | 67  | 480  | 61-1/4  | 47     | 39-1/4  | 11-5/8 | 58       | 2 FNPT  | 59                | 1-1/2 300# | 60                | 2 300# | 61                | 3 300# |                   |  |
| 3FG8F24N61B4Y  | 80  | 480  | 70-1/4  | 56     | 48-1/4  | 11-5/8 | 67       | 2 FNPT  | 68                | 1-1/2 300# | 69                | 2 300# | 70                | 3 300# |                   |  |
| 3FG8F24N88B4Y  | 118 | 480  | 97-1/4  | 83     | 75-1/4  | 11-5/8 | 94       | 2 FNPT  | 95                | 1-1/2 300# | 96                | 2 300# | 97                | 3 300# |                   |  |
| 3FG8F24N106B4Y   | 133 | 480  | 115-1/4 | 101    | 93-1/4  | 11-5/8 | 112      | 2 FNPT  | 113               | 1-1/2 300# | 114               | 2 300# | 115               | 3 300# |                   |  |
| 3FG8F24N120B4Y   | 151 | 480  | 123-1/4 | 115    | 107-1/4 | 11-5/8 | 126      | 2 FNPT  | 127               | 1-1/2 300# | 128               | 2 300# | 129               | 3 300# |                   |  |

**Diameter (in.): 10**

**Watt Density (w/sq.in.): 20**

| Gauger Fuel Gas Heater Dwg. No. FG-300 Dim. (Inches) A, B, B1, C, D, E, F, G > |     |      |         |        |         |    | D=6-3/4 |         | Nozzles Option 11 |         | Nozzles Option 12 |        | Nozzles Option 13 |        | Nozzles Option 14 |  |
|--|-----|------|---------|--------|---------|----|---------|---------|-------------------|---------|-------------------|--------|-------------------|--------|-------------------|--|
|  |     |      |         |        |         |    | E=15    |         |                   |         |                   |        |                   |        |                   |  |
| Catalog Number   | kW  | Volt | A       | B      | C       | F  | B1      | G1(in.) | B1                | G2(in.) | B1                | G3(in) | B1                | G4(in) |                   |  |
| 3FG10F27N52B4Y   | 75  | 480  | 63-1/4  | 45-1/4 | 46-3/4  | 15 | 60      | 3 300#  | 61                | 4 300#  | 62                | 6 300# | 63                | 8 300# |                   |  |
| 3FG10F27N61B4Y   | 90  | 480  | 72-1/4  | 54-1/4 | 53-3/4  | 15 | 69      | 3 300#  | 70                | 4 300#  | 71                | 6 300# | 72                | 8 300# |                   |  |
| 3FG10F27N88B4Y   | 133 | 480  | 99-1/4  | 81-1/4 | 82-3/4  | 15 | 96      | 3 300#  | 97                | 4 300#  | 98                | 6 300# | 99                | 8 300# |                   |  |
| 3FG10F27N106B4Y  | 151 | 480  | 117-1/4 | 99-1/4 | 100-3/4 | 15 | 114     | 3 300#  | 115               | 4 300#  | 116               | 6 300# | 117               | 8 300# |                   |  |

# Fuel Gas Heaters

## Type 3FG (6FG)(9FG)(15FG)

### 300#, 600#, 900#, and 1500# Ratings

**Diameter (in.): 10**

**Watt Density (w/sq.in.): 20**

| Gauger Fuel Gas Heater Dwg. No. FG-300 Dim. (Inches) A, B, B1, C, D, E, F, G > |     |      |         |         |         |    | D=6-3/4 |         | Nozzles Option 11 |         | Nozzles Option 12 |        | Nozzles Option 13 |        | Nozzles Option 14 |  |
|--|-----|------|---------|---------|---------|----|---------|---------|-------------------|---------|-------------------|--------|-------------------|--------|-------------------|--|
|  |     |      |         |         |         |    | E=15    |         |                   |         |                   |        |                   |        |                   |  |
| Catalog Number   | kW  | Volt | A       | B       | C       | F  | B1      | G1(in.) | B1                | G2(in.) | B1                | G3(in) | B1                | G4(in) |                   |  |
| 3FG10F27N120B4Y  | 171 | 480  | 131-1/4 | 113-1/4 | 114-3/4 | 15 | 128     | 3 300#  | 129               | 4 300#  | 130               | 6 300# | 131               | 8 300# |                   |  |
| 3FG10F30N33B4Y   | 50  | 480  | 49-1/2  | 30-1/4  | 31-3/4  | 15 | 45      | 3 300#  | 46                | 4 300#  | 47                | 6 300# | 48                | 8 300# |                   |  |
| 3FG10F30N43B4Y   | 67  | 480  | 59-1/2  | 40-1/4  | 41-3/4  | 15 | 55      | 3 300#  | 56                | 4 300#  | 57                | 6 300# | 58                | 8 300# |                   |  |
| 3FG10F30N52B4Y   | 83  | 480  | 63-1/4  | 45-1/4  | 46-3/4  | 15 | 60      | 3 300#  | 61                | 4 300#  | 62                | 6 300# | 63                | 8 300# |                   |  |
| 3FG10F30N61B4Y   | 100 | 480  | 72-1/4  | 54-1/4  | 53-3/4  | 15 | 69      | 3 300#  | 70                | 4 300#  | 71                | 6 300# | 72                | 8 300# |                   |  |
| 3FG10F30N88B4Y   | 148 | 480  | 99-1/4  | 81-1/4  | 82-3/4  | 15 | 96      | 3 300#  | 97                | 4 300#  | 98                | 6 300# | 99                | 8 300# |                   |  |
| 3FG10F30N106B4Y  | 167 | 480  | 117-1/4 | 99-1/4  | 100-3/4 | 15 | 114     | 3 300#  | 115               | 4 300#  | 116               | 6 300# | 117               | 8 300# |                   |  |
| 3FG10F30N120B4Y  | 190 | 480  | 131-1/4 | 113-1/4 | 114-3/4 | 15 | 128     | 3 300#  | 129               | 4 300#  | 130               | 6 300# | 131               | 8 300# |                   |  |
| 3FG10F36N33B4Y   | 60  | 480  | 49-1/2  | 30-1/4  | 31-3/4  | 15 | 45      | 3 300#  | 46                | 4 300#  | 47                | 6 300# | 48                | 8 300# |                   |  |
| 3FG10F36N43B4Y   | 80  | 480  | 59-1/2  | 40-1/4  | 41-3/4  | 15 | 55      | 3 300#  | 56                | 4 300#  | 57                | 6 300# | 58                | 8 300# |                   |  |
| 3FG10F36N52B4Y   | 100 | 480  | 63-1/4  | 45-1/4  | 46-3/4  | 15 | 60      | 3 300#  | 61                | 4 300#  | 62                | 6 300# | 63                | 8 300# |                   |  |
| 3FG10F36N61B4Y   | 120 | 480  | 72-1/4  | 54-1/4  | 53-3/4  | 15 | 69      | 3 300#  | 70                | 4 300#  | 71                | 6 300# | 72                | 8 300# |                   |  |
| 3FG10F36N88B4Y   | 178 | 480  | 99-1/4  | 81-1/4  | 82-3/4  | 15 | 96      | 3 300#  | 97                | 4 300#  | 98                | 6 300# | 99                | 8 300# |                   |  |
| 3FG10F36N106B4Y  | 200 | 480  | 117-1/4 | 99-1/4  | 100-3/4 | 15 | 114     | 3 300#  | 115               | 4 300#  | 116               | 6 300# | 117               | 8 300# |                   |  |
| 3FG10F36N120B4Y  | 228 | 480  | 131-1/4 | 113-1/4 | 114-3/4 | 15 | 128     | 3 300#  | 129               | 4 300#  | 130               | 6 300# | 131               | 8 300# |                   |  |

**Diameter (in.): 12**

**Watt Density (w/sq.in.): 20**

| Gauger Fuel Gas Heater Dwg. No. FG-300 Dim. (Inches) A, B, B1, C, D, E, F, G > |     |      |         |     |         |    | D=6  |         | Nozzles Option 11 |         | Nozzles Option 12 |        | Nozzles Option 13 |        | Nozzles Option 14 |  |
|--|-----|------|---------|-----|---------|----|------|---------|-------------------|---------|-------------------|--------|-------------------|--------|-------------------|--|
|  |     |      |         |     |         |    | E=16 |         |                   |         |                   |        |                   |        |                   |  |
| Catalog Number   | kW  | Volt | A       | B   | C       | F  | B1   | G1(in.) | B1                | G2(in.) | B1                | G3(in) | B1                | G4(in) |                   |  |
| 3FG12F36N52B4Y   | 100 | 480  | 63-1/4  | 46  | 37-1/4  | 16 | 61   | 3 300#  | 62                | 4 300#  | 63                | 6 300# | 64                | 8 300# |                   |  |
| 3FG12F36N61B4Y   | 120 | 480  | 72-1/4  | 55  | 46-1/4  | 16 | 70   | 3 300#  | 71                | 4 300#  | 72                | 6 300# | 73                | 8 300# |                   |  |
| 3FG12F36N88B4Y   | 178 | 480  | 99-1/4  | 82  | 73-1/4  | 16 | 97   | 3 300#  | 98                | 4 300#  | 99                | 6 300# | 100               | 8 300# |                   |  |
| 3FG12F36N106B4Y  | 200 | 480  | 117-1/4 | 100 | 91-1/4  | 16 | 115  | 3 300#  | 116               | 4 300#  | 117               | 6 300# | 118               | 8 300# |                   |  |
| 3FG12F36N120B4Y  | 228 | 480  | 131-1/4 | 114 | 105-1/4 | 16 | 129  | 3 300#  | 130               | 4 300#  | 131               | 6 300# | 132               | 8 300# |                   |  |
| 3FG12F48N33B4Y   | 80  | 480  | 44-1/4  | 27  | 19-1/4  | 15 | 42   | 3 300#  | 43                | 4 300#  | 44                | 6 300# | 45                | 8 300# |                   |  |
| 3FG12F48N43B4Y   | 107 | 480  | 54-1/4  | 37  | 29-1/4  | 15 | 52   | 3 300#  | 53                | 4 300#  | 54                | 6 300# | 55                | 8 300# |                   |  |
| 3FG12F48N52B4Y   | 133 | 480  | 63-1/4  | 46  | 37-1/4  | 16 | 61   | 3 300#  | 62                | 4 300#  | 63                | 6 300# | 64                | 8 300# |                   |  |
| 3FG12F48N61B4Y   | 160 | 480  | 72-1/4  | 55  | 46-1/4  | 16 | 70   | 3 300#  | 71                | 4 300#  | 72                | 6 300# | 73                | 8 300# |                   |  |
| 3FG12F48N88B4Y   | 237 | 480  | 99-1/4  | 82  | 73-1/4  | 16 | 97   | 3 300#  | 98                | 4 300#  | 99                | 6 300# | 100               | 8 300# |                   |  |
| 3FG12F48N106B4Y  | 267 | 480  | 117-1/4 | 100 | 91-1/4  | 16 | 115  | 3 300#  | 116               | 4 300#  | 117               | 6 300# | 118               | 8 300# |                   |  |
| 3FG12F48N120B4Y  | 304 | 480  | 131-1/4 | 114 | 105-1/4 | 16 | 129  | 3 300#  | 130               | 4 300#  | 131               | 6 300# | 132               | 8 300# |                   |  |

**Diameter (in.): 14**

**Watt Density (w/sq.in.): 20**

| Gauger Fuel Gas Heater Dwg. No. FG-300 Dim. (Inches) A, B, B1, C, D, E, F, G > |     |      |         |     |         |    | D=6  |         | Nozzles Option 11 |         | Nozzles Option 12 |        | Nozzles Option 13 |        | Nozzles Option 14 |  |
|--|-----|------|---------|-----|---------|----|------|---------|-------------------|---------|-------------------|--------|-------------------|--------|-------------------|--|
|  |     |      |         |     |         |    | E=17 |         |                   |         |                   |        |                   |        |                   |  |
| Catalog Number   | kW  | Volt | A       | B   | C       | F  | B1   | G1(in.) | B1                | G2(in.) | B1                | G3(in) | B1                | G4(in) |                   |  |
| 3FG14F48N52B4Y   | 133 | 480  | 63-3/4  | 46  | 37-1/4  | 17 | 62   | 3 300#  | 63                | 4 300#  | 64                | 6 300# | 65                | 8 300# |                   |  |
| 3FG14F48N61B4Y   | 160 | 480  | 72-3/4  | 55  | 46-1/4  | 17 | 71   | 3 300#  | 72                | 4 300#  | 73                | 6 300# | 74                | 8 300# |                   |  |
| 3FG14F48N88B4Y   | 237 | 480  | 99-3/4  | 82  | 73-1/4  | 17 | 98   | 3 300#  | 99                | 4 300#  | 100               | 6 300# | 101               | 8 300# |                   |  |
| 3FG14F48N106B4Y  | 268 | 480  | 117-3/4 | 100 | 91-1/4  | 17 | 116  | 3 300#  | 117               | 4 300#  | 118               | 6 300# | 119               | 8 300# |                   |  |
| 3FG14F48N120B4Y  | 304 | 480  | 131-3/4 | 114 | 105-1/4 | 17 | 130  | 3 300#  | 131               | 4 300#  | 132               | 6 300# | 133               | 8 300# |                   |  |

# Fuel Gas Heaters

Type 3FG (6FG)(9FG)(15FG)  
300#, 600#, 900#, and 1500# Ratings

Diameter (in.): 14

Watt Density (w/sq.in.): 20

| Gaumer Fuel Gas Heater Dwg. No. FG-300 Dim.<br>(Inches) A, B, B1, C, D, E, F, G > |     |      |         |     | D=6<br>E=17 |    | Nozzles<br>Option 11 |         | Nozzles<br>Option 12 |         | Nozzles<br>Option 13 |        | Nozzles<br>Option 14 |        |
|---|-----|------|---------|-----|-------------|----|----------------------|---------|----------------------|---------|----------------------|--------|----------------------|--------|
| Catalog Number  | kW  | Volt | A       | B   | C           | F  | B1                   | G1(in.) | B1                   | G2(in.) | B1                   | G3(in) | B1                   | G4(in) |
| 3FG14F54N33B4Y  | 90  | 480  | 44-3/4  | 27  | 18-1/4      | 17 | 43                   | 3 300#  | 44                   | 4 300#  | 45                   | 6 300# | 46                   | 8 300# |
| 3FG14F54N43B4Y  | 120 | 480  | 54-3/4  | 37  | 28-1/4      | 17 | 53                   | 3 300#  | 54                   | 4 300#  | 55                   | 6 300# | 56                   | 8 300# |
| 3FG14F54N52B4Y  | 150 | 480  | 63-3/4  | 46  | 37-1/4      | 17 | 62                   | 3 300#  | 63                   | 4 300#  | 64                   | 6 300# | 65                   | 8 300# |
| 3FG14F54N61B4Y  | 180 | 480  | 72-3/4  | 55  | 46-1/4      | 17 | 71                   | 3 300#  | 72                   | 4 300#  | 73                   | 6 300# | 74                   | 8 300# |
| 3FG14F54N88B4Y  | 266 | 480  | 99-3/4  | 82  | 73-1/4      | 17 | 98                   | 3 300#  | 99                   | 4 300#  | 100                  | 6 300# | 101                  | 8 300# |
| 3FG14F54N106B4Y   | 300 | 480  | 117-3/4 | 100 | 91-1/4      | 17 | 116                  | 3 300#  | 117                  | 4 300#  | 118                  | 6 300# | 119                  | 8 300# |
| 3FG14F54N120B4Y   | 341 | 480  | 131-3/4 | 114 | 105-1/4     | 17 | 130                  | 3 300#  | 131                  | 4 300#  | 132                  | 6 300# | 133                  | 8 300# |
| 3FG14F60N33B4Y  | 100 | 480  | 44-3/4  | 27  | 18-1/4      | 17 | 43                   | 3 300#  | 44                   | 4 300#  | 45                   | 6 300# | 46                   | 8 300# |
| 3FG14F60N43B4Y  | 133 | 480  | 54-3/4  | 37  | 28-1/4      | 17 | 53                   | 3 300#  | 54                   | 4 300#  | 55                   | 6 300# | 56                   | 8 300# |
| 3FG14F60N52B4Y  | 167 | 480  | 63-3/4  | 46  | 37-1/4      | 17 | 62                   | 3 300#  | 63                   | 4 300#  | 64                   | 6 300# | 65                   | 8 300# |
| 3FG14F60N61B4Y  | 200 | 480  | 72-3/4  | 55  | 46-1/4      | 17 | 71                   | 3 300#  | 72                   | 4 300#  | 73                   | 6 300# | 74                   | 8 300# |
| 3FG14F60N88B4Y  | 296 | 480  | 99-3/4  | 82  | 73-1/4      | 17 | 98                   | 3 300#  | 99                   | 4 300#  | 100                  | 6 300# | 101                  | 8 300# |
| 3FG14F60N106B4Y   | 334 | 480  | 117-3/4 | 100 | 91-1/4      | 17 | 116                  | 3 300#  | 117                  | 4 300#  | 118                  | 6 300# | 119                  | 8 300# |
| 3FG14F60N120B4Y   | 380 | 480  | 131-3/4 | 114 | 105-1/4     | 17 | 130                  | 3 300#  | 131                  | 4 300#  | 132                  | 6 300# | 133                  | 8 300# |
| 3FG14F72N33B4Y  | 120 | 480  | 44-3/4  | 27  | 18-1/4      | 17 | 43                   | 3 300#  | 44                   | 4 300#  | 45                   | 6 300# | 46                   | 8 300# |
| 3FG14F72N43B4Y  | 160 | 480  | 54-3/4  | 37  | 28-1/4      | 17 | 53                   | 3 300#  | 54                   | 4 300#  | 55                   | 6 300# | 56                   | 8 300# |
| 3FG14F72N52B4Y  | 200 | 480  | 63-3/4  | 46  | 37-1/4      | 17 | 62                   | 3 300#  | 63                   | 4 300#  | 64                   | 6 300# | 65                   | 8 300# |
| 3FG14F72N61B4Y  | 240 | 480  | 72-3/4  | 55  | 46-1/4      | 17 | 71                   | 3 300#  | 72                   | 4 300#  | 73                   | 6 300# | 74                   | 8 300# |
| 3FG14F72N88B4Y  | 355 | 480  | 99-3/4  | 82  | 73-1/4      | 17 | 98                   | 3 300#  | 99                   | 4 300#  | 100                  | 6 300# | 101                  | 8 300# |
| 3FG14F72N106B4Y   | 401 | 480  | 117-3/4 | 100 | 91-1/4      | 17 | 116                  | 3 300#  | 117                  | 4 300#  | 118                  | 6 300# | 119                  | 8 300# |
| 3FG14F72N120B4Y   | 456 | 480  | 131-3/4 | 114 | 105-1/4     | 17 | 130                  | 3 300#  | 131                  | 4 300#  | 132                  | 6 300# | 133                  | 8 300# |

# Fuel Gas Heaters

Type 3FG (6FG)(9FG)(15FG)  
300#, 600#, 900#, and 1500# Ratings

## Watt Density: 15

**Diameter (in.): 3**

**Watt Density (w/sq.in.): 15**

| Gauger Fuel Gas Heater Dwg. No. FG-300 Dim. (Inches) A, B, B1, C, D, E, F, G > |    |      |         |     | D=4     |       | Nozzles Option 11 |         | Nozzles Option 12 |         | Nozzles Option 13 |        | Nozzles Option 14 |        |
|--|----|------|---------|-----|---------|-------|-------------------|---------|-------------------|---------|-------------------|--------|-------------------|--------|
|  |    |      |         |     | E=6-1/2 |       |                   |         |                   |         |                   |        |                   |        |
| Catalog Number   | kW | Volt | A       | B   | C       | F     | B1                | G1(in.) | B1                | G2(in.) | B1                | G3(in) | B1                | G4(in) |
| 3FG3F3N106H4Y  | 15 | 480  | 112-1/2 | N/A | 97      | 6-1/2 | 109               | 1 FNPT  | 111               | 1 300#  | 113               | 2 300# | 114               | 3 300# |
| 3FG3F3N120H4Y  | 15 | 480  | 126-1/2 | N/A | 111     | 6-1/2 | 123               | 1 FNPT  | 125               | 1 300#  | 127               | 2 300# | 128               | 3 300# |
| 3FG3F3N140H4Y  | 18 | 480  | 146-1/2 | N/A | 131     | 6-1/2 | 143               | 1 FNPT  | 145               | 1 300#  | 147               | 2 300# | 148               | 3 300# |
| 3FG3F3N160H4Y  | 20 | 480  | 166-1/2 | N/A | 151     | 6-1/2 | 163               | 1 FNPT  | 165               | 1 300#  | 167               | 2 300# | 168               | 3 300# |

**Diameter (in.): 4**

**Watt Density (w/sq.in.): 15**

| Gauger Fuel Gas Heater Dwg. No. FG-300 Dim. (Inches) A, B, B1, C, D, E, F, G > |    |      |     |     | D=4     |       | Nozzles Option 11 |         | Nozzles Option 12 |         | Nozzles Option 13 |        | Nozzles Option 14 |        |
|--|----|------|-----|-----|---------|-------|-------------------|---------|-------------------|---------|-------------------|--------|-------------------|--------|
|  |    |      |     |     | E=7-1/2 |       |                   |         |                   |         |                   |        |                   |        |
| Catalog Number   | kW | Volt | A   | B   | C       | F     | B1                | G1(in.) | B1                | G2(in.) | B1                | G3(in) | B1                | G4(in) |
| 3FG4F6N106H4Y  | 28 | 480  | 113 | 102 | 97      | 7-1/2 | 110               | 1 FNPT  | 111               | 1 300#  | 113               | 2 300# | 114               | 3 300# |
| 3FG4F6N120H4Y  | 30 | 480  | 127 | 116 | 111     | 7-1/2 | 124               | 1 FNPT  | 125               | 1 300#  | 127               | 2 300# | 128               | 3 300# |
| 3FG4F6N140H4Y  | 35 | 480  | 147 | 136 | 131     | 7-1/2 | 144               | 1 FNPT  | 145               | 1 300#  | 147               | 2 300# | 148               | 3 300# |
| 3FG4F6N160H4Y  | 40 | 480  | 167 | 156 | 151     | 7-1/2 | 164               | 1 FNPT  | 165               | 1 300#  | 167               | 2 300# | 168               | 3 300# |

**Diameter (in.): 5**

**Watt Density (w/sq.in.): 15**

| Gauger Fuel Gas Heater Dwg. No. FG-300 Dim. (Inches) A, B, B1, C, D, E, F, G > |    |      |         |         | D=4-1/2 |       | Nozzles Option 11 |         | Nozzles Option 12 |            | Nozzles Option 13 |        | Nozzles Option 14 |        |
|--|----|------|---------|---------|---------|-------|-------------------|---------|-------------------|------------|-------------------|--------|-------------------|--------|
|  |    |      |         |         | E=8-1/2 |       |                   |         |                   |            |                   |        |                   |        |
| Catalog Number   | kW | Volt | A       | B       | C       | F     | B1                | G1(in.) | B1                | G2(in.)    | B1                | G3(in) | B1                | G4(in) |
| 3FG5F6N106H4Y  | 28 | 480  | 113-3/4 | 101-1/2 | 94-3/4  | 8-1/2 | 111               | 2 FNPT  | 112               | 1-1/2 300# | 113               | 2 300# | 114               | 3 300# |
| 3FG5F6N120H4Y  | 30 | 480  | 127-3/4 | 115-1/2 | 108-3/4 | 8-1/2 | 125               | 2 FNPT  | 126               | 1-1/2 300# | 127               | 2 300# | 128               | 3 300# |
| 3FG5F6N140H4Y  | 35 | 480  | 147-3/4 | 135-1/2 | 128-3/4 | 8-1/2 | 145               | 2 FNPT  | 146               | 1-1/2 300# | 147               | 2 300# | 148               | 3 300# |
| 3FG5F6N160H4Y  | 40 | 480  | 167-3/4 | 155-1/2 | 148-3/4 | 8-1/2 | 165               | 2 FNPT  | 166               | 1-1/2 300# | 167               | 2 300# | 168               | 3 300# |
| 3FG5F9N106H4Y  | 42 | 480  | 113-3/4 | 101-1/2 | 94-3/4  | 8-1/2 | 111               | 2 FNPT  | 112               | 1-1/2 300# | 113               | 2 300# | 114               | 3 300# |
| 3FG5F9N120H4Y  | 45 | 480  | 127-3/4 | 115-1/2 | 108-3/4 | 8-1/2 | 125               | 2 FNPT  | 126               | 1-1/2 300# | 127               | 2 300# | 128               | 3 300# |
| 3FG5F9N140H4Y  | 53 | 480  | 147-3/4 | 135-1/2 | 128-3/4 | 8-1/2 | 145               | 2 FNPT  | 146               | 1-1/2 300# | 147               | 2 300# | 148               | 3 300# |
| 3FG5F9N160H4Y  | 60 | 480  | 167-3/4 | 155-1/2 | 148-3/4 | 8-1/2 | 165               | 2 FNPT  | 166               | 1-1/2 300# | 167               | 2 300# | 168               | 3 300# |

**Diameter (in.): 6**

**Watt Density (w/sq.in.): 15**

| Gauger Fuel Gas Heater Dwg. No. FG-300 Dim. (Inches) A, B, B1, C, D, E, F, G > |    |      |         |         | D=4-1/2 |       | Nozzles Option 11 |         | Nozzles Option 12 |            | Nozzles Option 13 |        | Nozzles Option 14 |        |
|--|----|------|---------|---------|---------|-------|-------------------|---------|-------------------|------------|-------------------|--------|-------------------|--------|
|  |    |      |         |         | E=9-5/8 |       |                   |         |                   |            |                   |        |                   |        |
| Catalog Number   | kW | Volt | A       | B       | C       | F     | B1                | G1(in.) | B1                | G2(in.)    | B1                | G3(in) | B1                | G4(in) |
| 3FG6F12N106H4Y   | 56 | 480  | 114-1/4 | 101-1/2 | 94-3/4  | 9-5/8 | 112               | 2 FNPT  | 112               | 1-1/2 300# | 114               | 2 300# | 115               | 3 300# |
| 3FG6F12N120H4Y   | 60 | 480  | 128-1/4 | 115-1/2 | 108-3/4 | 9-5/8 | 126               | 2 FNPT  | 126               | 1-1/2 300# | 128               | 2 300# | 129               | 3 300# |
| 3FG6F12N140H4Y   | 70 | 480  | 148-1/4 | 135-1/2 | 128-3/4 | 9-5/8 | 146               | 2 FNPT  | 146               | 1-1/2 300# | 148               | 2 300# | 149               | 3 300# |
| 3FG6F12N160H4Y   | 80 | 480  | 168-1/4 | 155-1/2 | 148-3/4 | 9-5/8 | 166               | 2 FNPT  | 166               | 1-1/2 300# | 168               | 2 300# | 169               | 3 300# |
| 3FG6F15N106H4Y   | 70 | 480  | 114-1/4 | 101-1/2 | 94-3/4  | 9-5/8 | 112               | 2 FNPT  | 112               | 1-1/2 300# | 114               | 2 300# | 115               | 3 300# |
| 3FG6F15N120H4Y   | 75 | 480  | 128-1/4 | 115-1/2 | 108-3/4 | 9-5/8 | 126               | 2 FNPT  | 126               | 1-1/2 300# | 128               | 2 300# | 129               | 3 300# |
| 3FG6F15N140H4Y   | 88 | 480  | 148-1/4 | 135-1/2 | 128-3/4 | 9-5/8 | 146               | 2 FNPT  | 146               | 1-1/2 300# | 148               | 2 300# | 149               | 3 300# |

# Fuel Gas Heaters

## Type 3FG (6FG)(9FG)(15FG)

### 300#, 600#, 900#, and 1500# Ratings

**Diameter (in.): 6**

**Watt Density (w/sq.in.): 15**

| Gauger Fuel Gas Heater Dwg. No. FG-300 Dim. (Inches) A, B, B1, C, D, E, F, G > |     |      |         |         |         |       | D=4-1/2<br>E=9-5/8 |         | Nozzles Option 11 |            | Nozzles Option 12 |        | Nozzles Option 13 |        | Nozzles Option 14 |  |
|--|-----|------|---------|---------|---------|-------|--------------------|---------|-------------------|------------|-------------------|--------|-------------------|--------|-------------------|--|
| Catalog Number   | kW  | Volt | A       | B       | C       | F     | B1                 | G1(in.) | B1                | G2(in.)    | B1                | G3(in) | B1                | G4(in) |                   |  |
| 3FG6F15N160H4Y   | 101 | 480  | 168-1/4 | 155-1/2 | 148-3/4 | 9-5/8 | 166                | 2 FNPT  | 166               | 1-1/2 300# | 168               | 2 300# | 169               | 3 300# |                   |  |

**Diameter (in.): 8**

**Watt Density (w/sq.in.): 15**

| Gauger Fuel Gas Heater Dwg. No. FG-300 Dim. (Inches) A, B, B1, C, D, E, F, G > |     |      |         |     |         |        | D=5<br>E=11-5/8 |         | Nozzles Option 11 |            | Nozzles Option 12 |        | Nozzles Option 13 |        | Nozzles Option 14 |  |
|--|-----|------|---------|-----|---------|--------|-----------------|---------|-------------------|------------|-------------------|--------|-------------------|--------|-------------------|--|
| Catalog Number   | kW  | Volt | A       | B   | C       | F      | B1              | G1(in.) | B1                | G2(in.)    | B1                | G3(in) | B1                | G4(in) |                   |  |
| 3FG8F18N106H4Y   | 83  | 480  | 115-1/4 | 101 | 93-1/4  | 11-5/8 | 112             | 2 FNPT  | 113               | 1-1/2 300# | 114               | 2 300# | 115               | 3 300# |                   |  |
| 3FG8F18N120H4Y   | 90  | 480  | 123-1/4 | 115 | 107-1/4 | 11-5/8 | 126             | 2 FNPT  | 127               | 1-1/2 300# | 128               | 2 300# | 129               | 3 300# |                   |  |
| 3FG8F18N140H4Y   | 105 | 480  | 149-1/4 | 135 | 127-1/4 | 11-5/8 | 146             | 2 FNPT  | 147               | 1-1/2 300# | 148               | 2 300# | 149               | 3 300# |                   |  |
| 3FG8F18N160H4Y   | 121 | 480  | 169-1/4 | 155 | 147-1/4 | 11-5/8 | 166             | 2 FNPT  | 167               | 1-1/2 300# | 168               | 2 300# | 169               | 3 300# |                   |  |
| 3FG8F24N106H4Y   | 111 | 480  | 115-1/4 | 101 | 93-1/4  | 11-5/8 | 112             | 2 FNPT  | 113               | 1-1/2 300# | 114               | 2 300# | 115               | 3 300# |                   |  |
| 3FG8F24N120H4Y   | 120 | 480  | 123-1/4 | 115 | 107-1/4 | 11-5/8 | 126             | 2 FNPT  | 127               | 1-1/2 300# | 128               | 2 300# | 129               | 3 300# |                   |  |
| 3FG8F24N140H4Y   | 140 | 480  | 149-1/4 | 135 | 127-1/4 | 11-5/8 | 146             | 2 FNPT  | 147               | 1-1/2 300# | 148               | 2 300# | 149               | 3 300# |                   |  |
| 3FG8F24N160H4Y   | 161 | 480  | 169-1/4 | 155 | 147-1/4 | 11-5/8 | 166             | 2 FNPT  | 167               | 1-1/2 300# | 168               | 2 300# | 169               | 3 300# |                   |  |

**Diameter (in.): 10**

**Watt Density (w/sq.in.): 15**

| Gauger Fuel Gas Heater Dwg. No. FG-300 Dim. (Inches) A, B, B1, C, D, E, F, G > |     |      |         |         |         |    | D=6-3/4<br>E=15 |         | Nozzles Option 11 |         | Nozzles Option 12 |        | Nozzles Option 13 |        | Nozzles Option 14 |  |
|--|-----|------|---------|---------|---------|----|-----------------|---------|-------------------|---------|-------------------|--------|-------------------|--------|-------------------|--|
| Catalog Number   | kW  | Volt | A       | B       | C       | F  | B1              | G1(in.) | B1                | G2(in.) | B1                | G3(in) | B1                | G4(in) |                   |  |
| 3FG10F36N106H4Y  | 167 | 480  | 117-1/4 | 99-1/4  | 100-3/4 | 15 | 114             | 3 300#  | 115               | 4 300#  | 116               | 6 300# | 117               | 8 300# |                   |  |
| 3FG10F36N120H4Y  | 180 | 480  | 131-1/4 | 113-1/4 | 114-3/4 | 15 | 128             | 3 300#  | 129               | 4 300#  | 130               | 6 300# | 131               | 8 300# |                   |  |
| 3FG10F36N140H4Y  | 210 | 480  | 151-1/4 | 133-1/4 | 134-3/4 | 15 | 148             | 3 300#  | 149               | 4 300#  | 150               | 6 300# | 151               | 8 300# |                   |  |
| 3FG10F36N160H4Y  | 241 | 480  | 171-1/4 | 153-1/4 | 154-3/4 | 15 | 168             | 3 300#  | 169               | 4 300#  | 170               | 6 300# | 171               | 8 300# |                   |  |

**Diameter (in.): 12**

**Watt Density (w/sq.in.): 15**

| Gauger Fuel Gas Heater Dwg. No. FG-300 Dim. (Inches) A, B, B1, C, D, E, F, G > |     |      |         |     |         |    | D=6<br>E=16 |         | Nozzles Option 11 |         | Nozzles Option 12 |        | Nozzles Option 13 |        | Nozzles Option 14 |  |
|--|-----|------|---------|-----|---------|----|-------------|---------|-------------------|---------|-------------------|--------|-------------------|--------|-------------------|--|
| Catalog Number   | kW  | Volt | A       | B   | C       | F  | B1          | G1(in.) | B1                | G2(in.) | B1                | G3(in) | B1                | G4(in) |                   |  |
| 3FG12F48N106H4Y  | 222 | 480  | 117-1/4 | 100 | 91-1/4  | 16 | 115         | 3 300#  | 116               | 4 300#  | 117               | 6 300# | 118               | 8 300# |                   |  |
| 3FG12F48N120H4Y  | 240 | 480  | 131-1/4 | 114 | 105-1/4 | 16 | 129         | 3 300#  | 130               | 4 300#  | 131               | 6 300# | 132               | 8 300# |                   |  |
| 3FG12F48N140H4Y  | 280 | 480  | 151-1/4 | 134 | 129-1/4 | 16 | 149         | 3 300#  | 150               | 4 300#  | 151               | 6 300# | 152               | 8 300# |                   |  |
| 3FG12F48N160H4Y  | 321 | 480  | 171-1/4 | 154 | 145-1/4 | 16 | 169         | 3 300#  | 170               | 4 300#  | 171               | 6 300# | 172               | 8 300# |                   |  |

**Diameter (in.): 14**

**Watt Density (w/sq.in.): 15**

| Gauger Fuel Gas Heater Dwg. No. FG-300 Dim. (Inches) A, B, B1, C, D, E, F, G > |     |      |         |     |         |    | D=8<br>E=17 |         | Nozzles Option 11 |         | Nozzles Option 12 |        | Nozzles Option 13 |        | Nozzles Option 14 |  |
|--|-----|------|---------|-----|---------|----|-------------|---------|-------------------|---------|-------------------|--------|-------------------|--------|-------------------|--|
| Catalog Number   | kW  | Volt | A       | B   | C       | F  | B1          | G1(in.) | B1                | G2(in.) | B1                | G3(in) | B1                | G4(in) |                   |  |
| 3FG14F54N106H4Y  | 250 | 480  | 117-3/4 | 100 | 91-1/4  | 17 | 116         | 3 300#  | 117               | 4 300#  | 118               | 6 300# | 119               | 8 300# |                   |  |
| 3FG14F54N120H4Y  | 270 | 480  | 131-3/4 | 114 | 105-1/4 | 17 | 130         | 3 300#  | 131               | 4 300#  | 132               | 6 300# | 133               | 8 300# |                   |  |

# Fuel Gas Heaters

## Type 3FG (6FG)(9FG)(15FG)

### 300#, 600#, 900#, and 1500# Ratings

**Diameter (in.): 14**

**Watt Density (w/sq.in.): 15**

| Gauger Fuel Gas Heater Dwg. No. FG-300 Dim. (Inches) A, B, B1, C, D, E, F, G > |     |      |         |     |         |    | D=8<br>E=17 |         | Nozzles Option 11 |         | Nozzles Option 12 |        | Nozzles Option 13 |        | Nozzles Option 14 |  |
|--|-----|------|---------|-----|---------|----|-------------|---------|-------------------|---------|-------------------|--------|-------------------|--------|-------------------|--|
| Catalog Number   | kW  | Volt | A       | B   | C       | F  | B1          | G1(in.) | B1                | G2(in.) | B1                | G3(in) | B1                | G4(in) |                   |  |
| 3FG14F54N140H4Y  | 315 | 480  | 151-3/4 | 134 | 129-1/4 | 17 | 150         | 3 300#  | 151               | 4 300#  | 152               | 6 300# | 153               | 8 300# |                   |  |
| 3FG14F54N160H4Y  | 362 | 480  | 171-3/4 | 154 | 145-1/4 | 17 | 170         | 3 300#  | 171               | 4 300#  | 172               | 6 300# | 173               | 8 300# |                   |  |
| 3FG14F60N106H4Y  | 278 | 480  | 117-3/4 | 100 | 91-1/4  | 17 | 116         | 3 300#  | 117               | 4 300#  | 118               | 6 300# | 119               | 8 300# |                   |  |
| 3FG14F60N120H4Y  | 300 | 480  | 131-3/4 | 114 | 105-1/4 | 17 | 130         | 3 300#  | 131               | 4 300#  | 132               | 6 300# | 133               | 8 300# |                   |  |
| 3FG14F60N140H4Y  | 350 | 480  | 151-3/4 | 134 | 129-1/4 | 17 | 150         | 3 300#  | 151               | 4 300#  | 152               | 6 300# | 153               | 8 300# |                   |  |
| 3FG14F60N160H4Y  | 402 | 480  | 171-3/4 | 154 | 145-1/4 | 17 | 170         | 3 300#  | 171               | 4 300#  | 172               | 6 300# | 173               | 8 300# |                   |  |
| 3FG14F72N106H4Y  | 334 | 480  | 117-3/4 | 100 | 91-1/4  | 17 | 116         | 3 300#  | 117               | 4 300#  | 118               | 6 300# | 119               | 8 300# |                   |  |
| 3FG14F72N120H4Y  | 360 | 480  | 131-3/4 | 114 | 105-1/4 | 17 | 130         | 3 300#  | 131               | 4 300#  | 132               | 6 300# | 133               | 8 300# |                   |  |
| 3FG14F72N140H4Y  | 420 | 480  | 151-3/4 | 134 | 129-1/4 | 17 | 150         | 3 300#  | 151               | 4 300#  | 152               | 6 300# | 153               | 8 300# |                   |  |
| 3FG14F72N160H4Y  | 482 | 480  | 171-3/4 | 154 | 145-1/4 | 17 | 170         | 3 300#  | 171               | 4 300#  | 172               | 6 300# | 173               | 8 300# |                   |  |

**Diameter (in.): 16**

**Watt Density (w/sq.in.): 15**

| Gauger Fuel Gas Heater Dwg. No. FG-300 Dim. (Inches) A, B, B1, C, D, E, F, G > |     |      |         |         |         |    | D=8-1/2<br>E=19 |         | Nozzles Option 11 |         | Nozzles Option 12 |        | Nozzles Option 13 |        | Nozzles Option 14 |  |
|--|-----|------|---------|---------|---------|----|-----------------|---------|-------------------|---------|-------------------|--------|-------------------|--------|-------------------|--|
| Catalog Number   | kW  | Volt | A       | B       | C       | F  | B1              | G1(in.) | B1                | G2(in.) | B1                | G3(in) | B1                | G4(in) |                   |  |
| 3FG16F84N106H4Y  | 389 | 480  | 120-1/4 | 97-1/2  | 89-1/4  | 19 | 114             | 3 300#  | 115               | 4 300#  | 116               | 6 300# | 117               | 8 300# |                   |  |
| 3FG16F84N120H4Y  | 420 | 480  | 134-1/4 | 111-1/2 | 103-1/4 | 19 | 128             | 3 300#  | 129               | 4 300#  | 130               | 6 300# | 131               | 8 300# |                   |  |
| 3FG16F84N140H4Y  | 490 | 480  | 154-1/4 | 131-1/2 | 123-1/4 | 19 | 148             | 3 300#  | 149               | 4 300#  | 150               | 6 300# | 151               | 8 300# |                   |  |
| 3FG16F84N160H4Y  | 563 | 480  | 174-1/4 | 151-1/2 | 143-1/4 | 19 | 168             | 3 300#  | 169               | 4 300#  | 170               | 6 300# | 171               | 8 300# |                   |  |

**Diameter (in.): 18**

**Watt Density (w/sq.in.): 15**

| Gauger Fuel Gas Heater Dwg. No. FG-300 Dim. (Inches) A, B, B1, C, D, E, F, G > |     |      |         |         |     |    | D=9-1/2<br>E=21 |         | Nozzles Option 11 |         | Nozzles Option 12 |        | Nozzles Option 13 |        | Nozzles Option 14 |  |
|--|-----|------|---------|---------|-----|----|-----------------|---------|-------------------|---------|-------------------|--------|-------------------|--------|-------------------|--|
| Catalog Number   | kW  | Volt | A       | B       | C   | F  | B1              | G1(in.) | B1                | G2(in.) | B1                | G3(in) | B1                | G4(in) |                   |  |
| 3FG18N108N106H4Y   | 500 | 480  | 122-1/2 | 96-1/2  | 86  | 21 | 114             | 3 300#  | 115               | 4 300#  | 116               | 6 300# | 118               | 8 300# |                   |  |
| 3FG18F108N106H4Y   | 500 | 480  | 122-1/2 | 96-1/2  | 86  | 21 | 114             | 3 300#  | 115               | 4 300#  | 116               | 6 300# | 118               | 8 300# |                   |  |
| 3FG18N108N120H4Y   | 540 | 480  | 136-1/2 | 110-1/2 | 100 | 21 | 127             | 3 300#  | 128               | 4 300#  | 129               | 6 300# | 131               | 8 300# |                   |  |
| 3FG18F108N120H4Y   | 540 | 480  | 136-1/2 | 110-1/2 | 100 | 21 | 127             | 3 300#  | 128               | 4 300#  | 129               | 6 300# | 131               | 8 300# |                   |  |
| 3FG18N108N140H4Y   | 630 | 480  | 156-1/2 | 130-1/2 | 120 | 21 | 147             | 3 300#  | 148               | 4 300#  | 149               | 6 300# | 151               | 8 300# |                   |  |
| 3FG18F108N140H4Y   | 630 | 480  | 156-1/2 | 130-1/2 | 120 | 21 | 147             | 3 300#  | 148               | 4 300#  | 149               | 6 300# | 151               | 8 300# |                   |  |
| 3FG18N108N160H4Y   | 724 | 480  | 176-1/2 | 150-1/2 | 140 | 21 | 167             | 3 300#  | 168               | 4 300#  | 169               | 6 300# | 171               | 8 300# |                   |  |
| 3FG18F108N160H4Y   | 724 | 480  | 176-1/2 | 150-1/2 | 140 | 21 | 167             | 3 300#  | 168               | 4 300#  | 169               | 6 300# | 171               | 8 300# |                   |  |

**Diameter (in.): 20**

**Watt Density (w/sq.in.): 15**

| Gauger Fuel Gas Heater Dwg. No. FG-300 Dim. (Inches) A, B, B1, C, D, E, F, G > |     |      |         |         |     |    | D=9-3/4<br>E=23 |         | Nozzles Option 11 |         | Nozzles Option 12 |        | Nozzles Option 13 |        | Nozzles Option 14 |  |
|--|-----|------|---------|---------|-----|----|-----------------|---------|-------------------|---------|-------------------|--------|-------------------|--------|-------------------|--|
| Catalog Number   | kW  | Volt | A       | B       | C   | F  | B1              | G1(in.) | B1                | G2(in.) | B1                | G3(in) | B1                | G4(in) |                   |  |
| 3FG20F144N106H4Y   | 667 | 480  | 123-1/2 | 96-1/4  | 86  | 23 | 115             | 3 300#  | 116               | 4 300#  | 117               | 6 300# | 119               | 8 300# |                   |  |
| 3FG20F144N120H4Y   | 720 | 480  | 137-1/2 | 110-1/4 | 100 | 23 | 129             | 3 300#  | 130               | 4 300#  | 131               | 6 300# | 133               | 8 300# |                   |  |
| 3FG20F144N140H4Y   | 840 | 480  | 157-1/2 | 130-1/4 | 120 | 23 | 149             | 3 300#  | 150               | 4 300#  | 151               | 6 300# | 153               | 8 300# |                   |  |
| 3FG20F144N160H4Y   | 965 | 480  | 177-1/2 | 150-1/4 | 140 | 23 | 169             | 3 300#  | 170               | 4 300#  | 171               | 6 300# | 173               | 8 300# |                   |  |

**Fuel Gas Heaters**  
 Type 3FG (6FG)(9FG)(15FG)  
 300#, 600#, 900#, and 1500# Ratings

Diameter (in.): 24

Watt Density (w/sq.in.): 15

| Gauger Fuel Gas Heater Dwg. No. FG-300 Dim.<br>(Inches) A, B, B1, C, D, E, F, G > |      |      |     |         |     |    | D=10-1/2<br>E=27 |         | Nozzles<br>Option 11 |         | Nozzles<br>Option 12 |         | Nozzles<br>Option 13 |         | Nozzles<br>Option 14 |  |
|---|------|------|-----|---------|-----|----|------------------|---------|----------------------|---------|----------------------|---------|----------------------|---------|----------------------|--|
| Catalog Number  | kW   | Volt | A   | B       | C   | F  | B1               | G1(in.) | B1                   | G2(in.) | B1                   | G3(in)  | B1                   | G4(in)  |                      |  |
| 3FG24F192N106H4Y  | 890  | 480  | 126 | 95-1/2  | 85  | 27 | 116              | 6 300#  | 117                  | 8 300#  | 118                  | 10 300# | 120                  | 12 300# |                      |  |
| 3FG24F192N120H4Y  | 960  | 480  | 140 | 109-1/2 | 99  | 27 | 130              | 6 300#  | 131                  | 8 300#  | 132                  | 10 300# | 134                  | 12 300# |                      |  |
| 3FG24F192N140H4Y  | 1120 | 480  | 160 | 129-1/2 | 119 | 27 | 150              | 6 300#  | 151                  | 8 300#  | 152                  | 10 300# | 154                  | 12 300# |                      |  |
| 3FG24F192N160H4Y  | 1286 | 480  | 180 | 149-1/2 | 139 | 27 | 170              | 6 300#  | 171                  | 8 300#  | 172                  | 10 300# | 174                  | 12 300# |                      |  |